



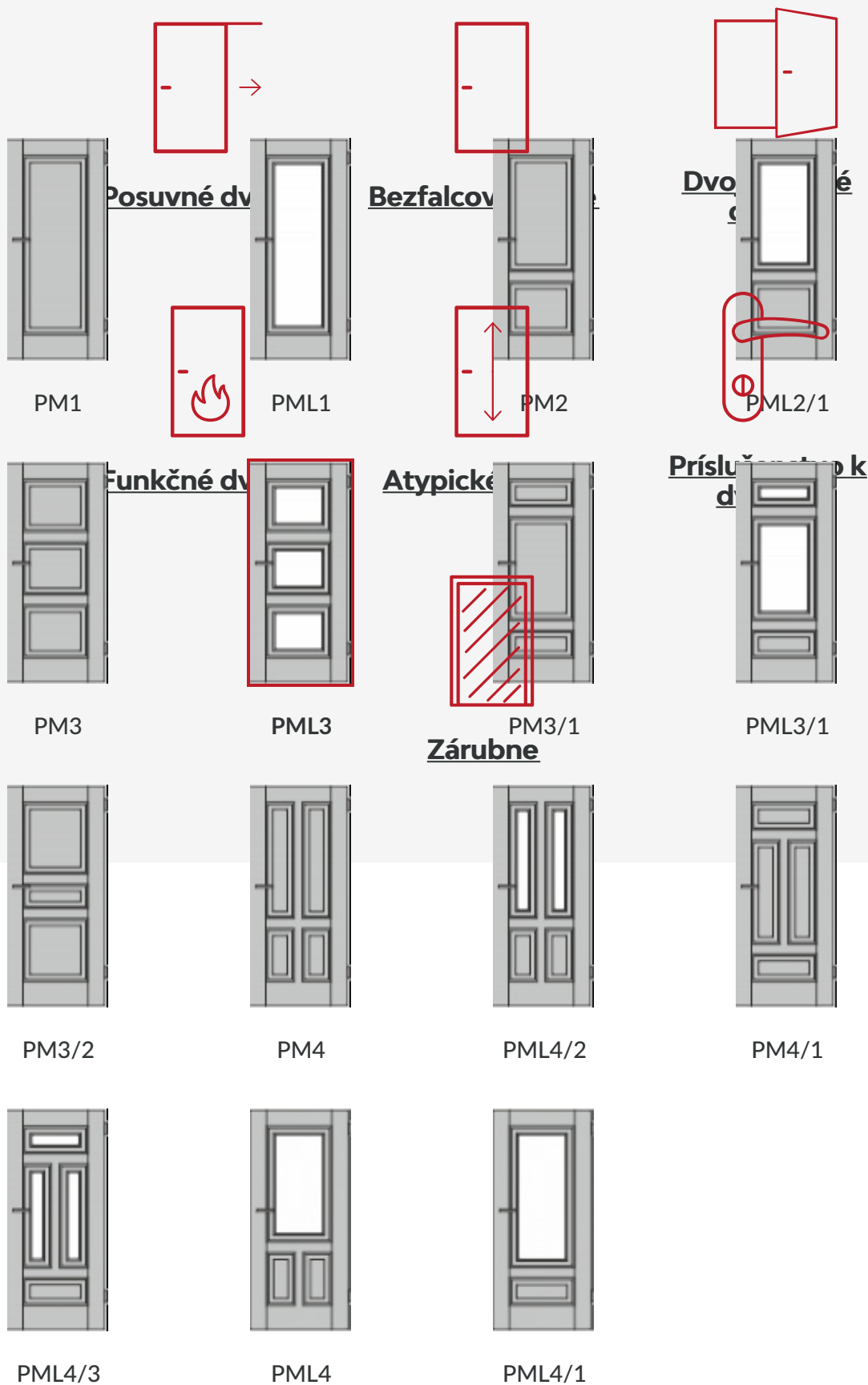
Tento obrázok dverí je ilustračný

**Interiérové dvere PRIMO**

Profilované interiérové dvere, ktoré sú okúzľujúcim príkladom secesnej dokonalosti Vás ohromia svojou nebývalou krásnou eleganciou. Dvere sa hodia zvlášť pre exkluzívne rekonštrukcie či rezidenčné projekty.

## Ďalšie prevedenia dverí PRIMO a zárubne

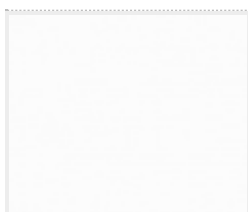
## Možnosti prevedenia



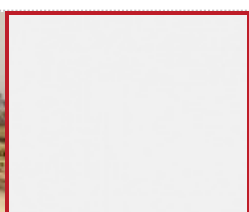
## Materiál a farebné prevedenia



Lak



Biela exklusív 9016

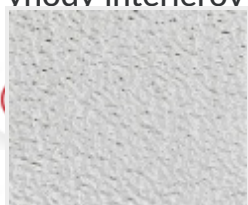


Biela exklusív

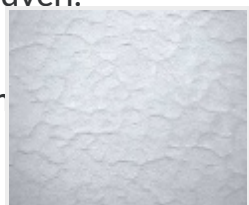
## Možnosti presklenia

## Exkluzívne profilované biele interiérové dvere

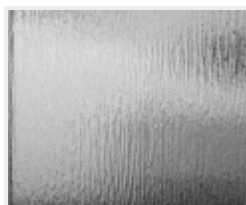
Výhodv interiérových dverí:



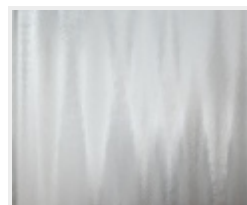
Elegantný retro design  
Crepí



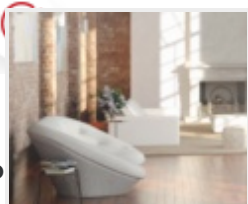
Kathedral



Kôra číra



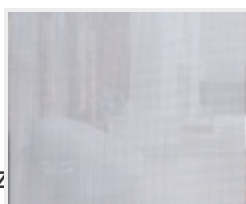
Činčila číra



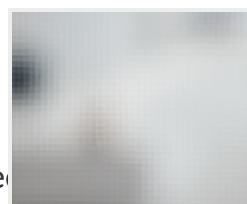
Prof



Matelux

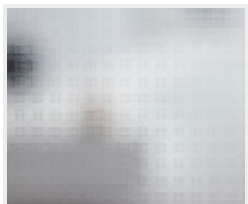


Krizet

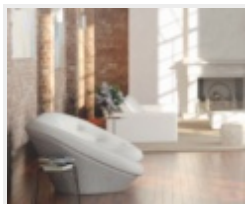


Master-garre

ohromia svojou nebývalo krásnou eleganciou. Dvere sa hodia zvlášť pre exkluzívne rekonštrukcie či rezidenčné projekty. Dvere ladia k tradičným architektonickým prvkom mnohých zrekonštruovaných budov napr. v kráľovskej mestskej časti Vinohrad. Ozdobné vchody do budov v štýle Art deco, secesné tepané schodište, vysoké stropy, drevené podlahy a tieto dvere. Dvere sú aj neodolateľnou súčasťou interiérových štýlov Provensal, Glamour či Retro.



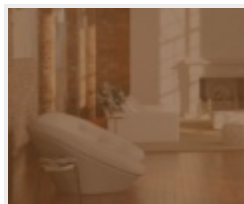
Masterlens



Connex číry



Connex mliečny



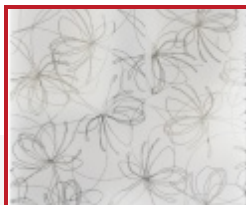
Planibel bronz



Thela číra



Pavé biele



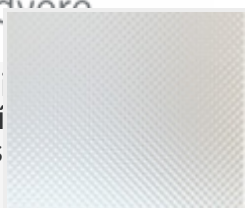
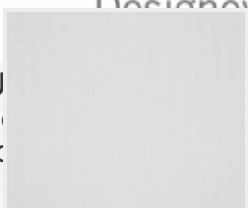
Petali



Panno



Designové dvere



... a montáž interiérových dverí a sme výhradnými  
... ačky PRÜM pre Českú a Slovenskú republiku s

DVERE PRÜM, s.r.o.

Hodonínska 8436/27

841 03 Bratislava

Farebné prevedenie steny

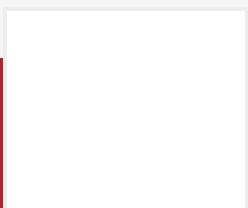


+421 944 501 505

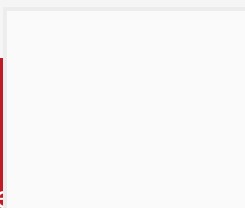
(Po - So 10.00-18.30 h)



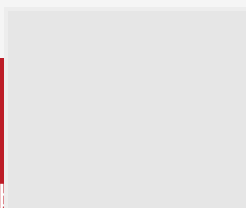
obchod@dvereprum.sk



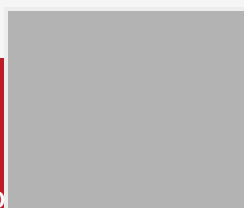
Biele



Šedá 1



Šedá 2



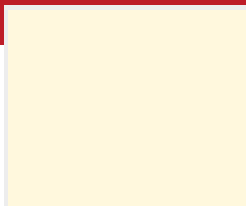
Šedá 3



Šedá 4



Žltá 1



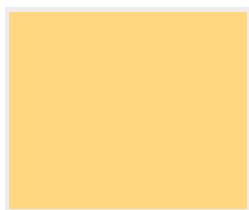
Žltá 2



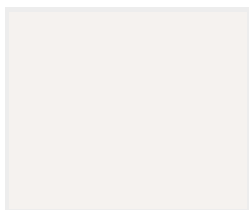
Žltá 3



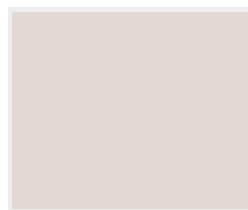
Žltá 4



Žltá 5



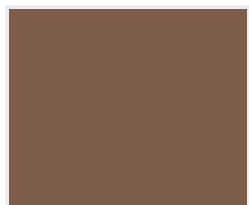
Hnedá 1



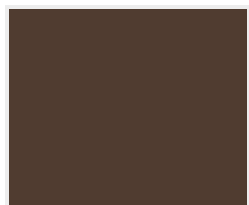
Hnedá 2



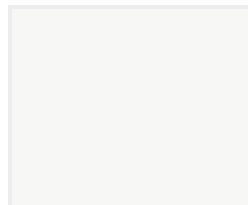
Hnedá 3



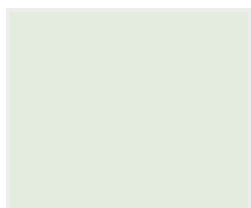
Hnedá 4



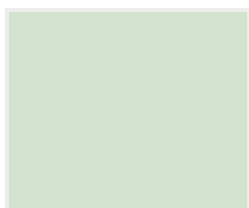
Hnedá 5



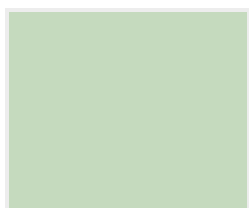
Zelená 1



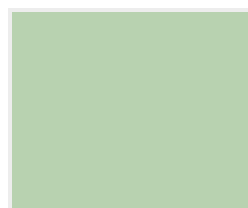
Zelená 2



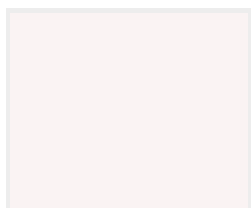
Zelená 3



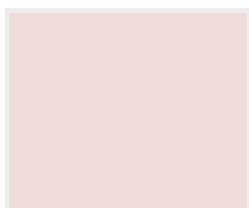
Zelená 4



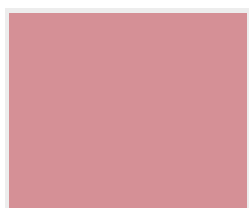
Zelená 5



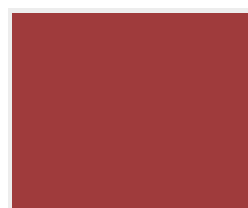
Červená 1



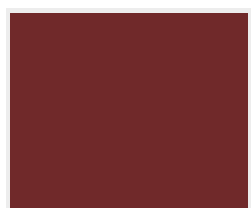
Červená 2



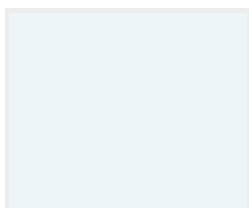
Červená 3



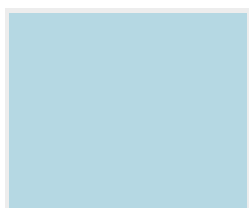
Červená 4



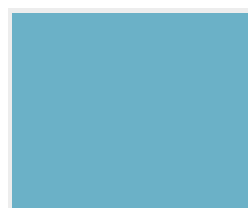
Červená 5



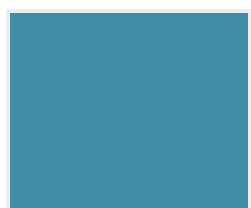
Modrá 1



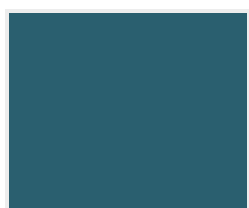
Modrá 2



Modrá 3

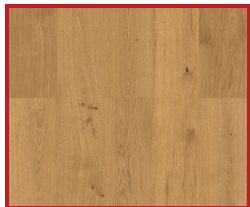


Modrá 4



Modrá 5

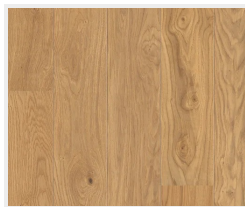
## Farebné prevedenie podlahy



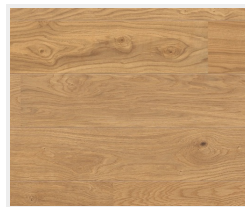
Dub Markant  
(zvislo)



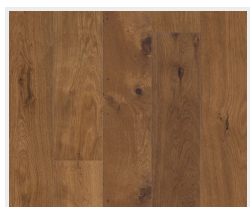
Dub Markant  
(priečne)



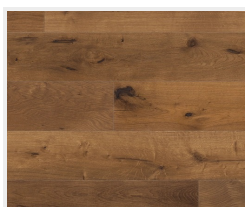
Dub Markant silk  
(zvislo)



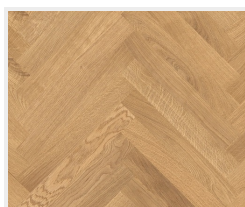
Dub Markant silk  
(priečne)



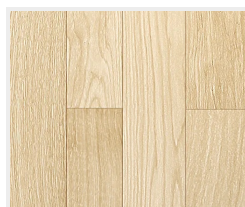
Dub Mocca  
Rustikal  
(zvislo)



Dub Mocca  
Rustikal  
(priečne)



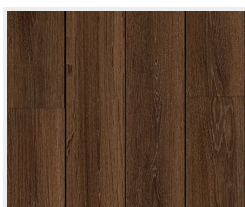
Dub Trend  
(vzor parketa)



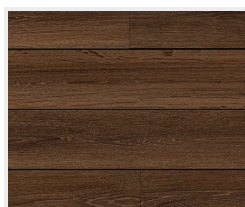
Drevená podlaha  
svetlá  
(zvislo)



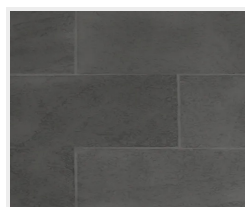
Drevená podlaha  
svetlá  
(priečne)



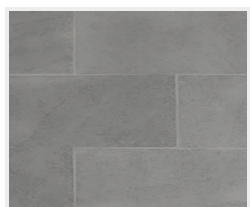
Drevená podlaha  
tmavá  
(zvislo)



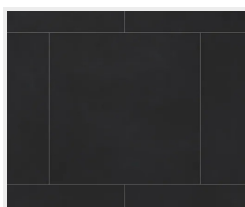
Drevená podlaha  
tmavá  
(priečne)



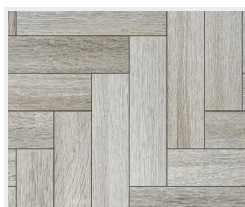
Dlažba  
(tmavo šedá)



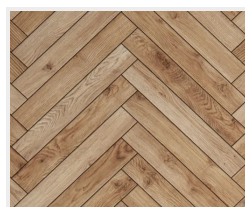
Dlažba  
(svetlo šedá)



Dlažba  
(čierna)



Parkety  
(šedé)



Parkety  
(dubové)



Betonová podlaha



Dub svetlý  
(zvislo)



Dub svetlý  
(priečne)



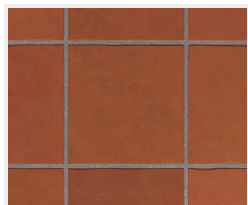
Dub tmavý  
(zvislo)



Dub tmavý  
(priečne)



Dlažba  
(biela)



Dlažba  
(terakota)