

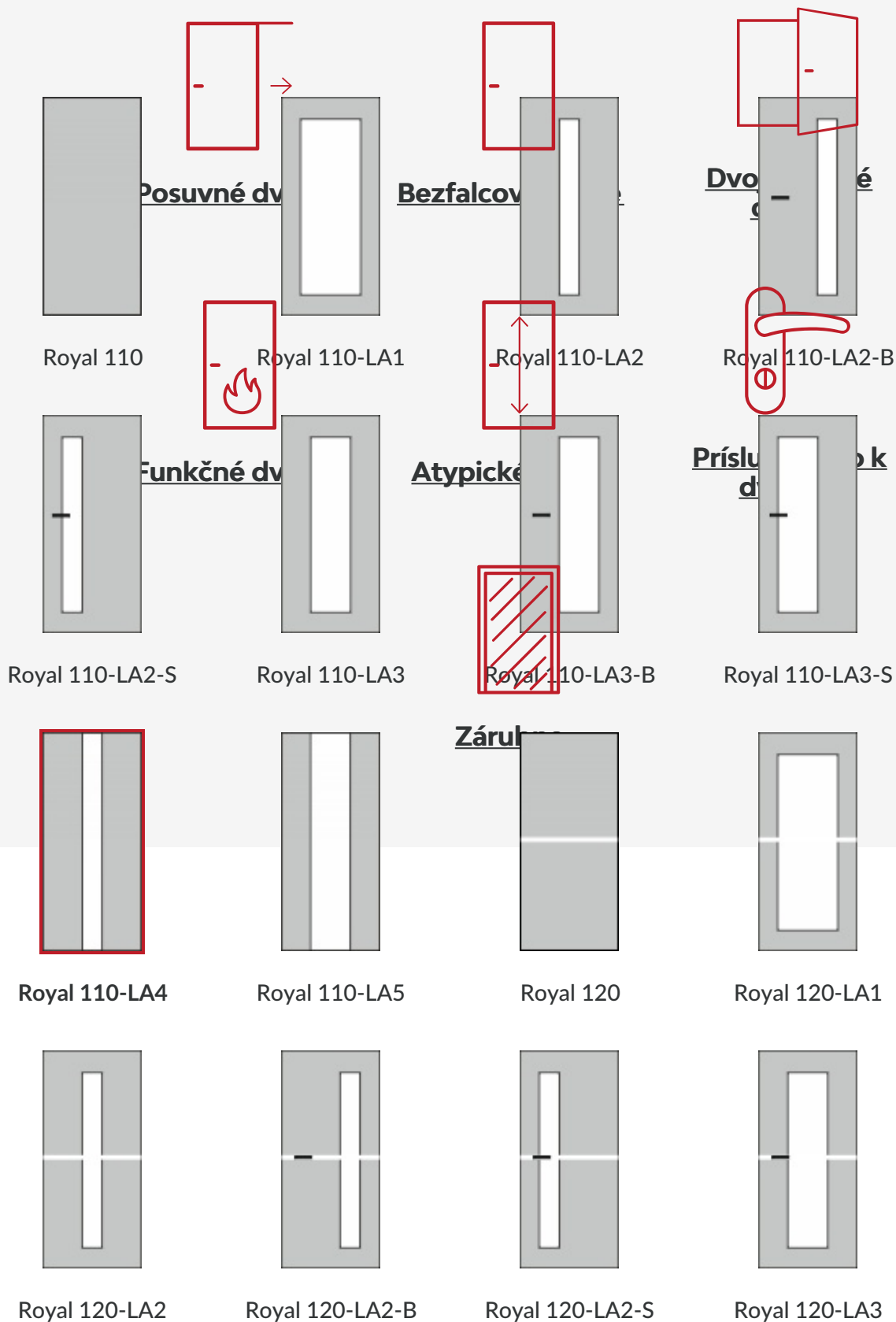


Tento obrázok dverí je ilustračný

Interiérové dvere Royal 1D

Elegantné interiérové dvere so štýlovo vsadeným sklom či nerezovými pásikmi, ktoré sú odrazom dnešného moderného štýlu bývania.

Možnosti prevedenia **Ďalšie prevedenia dverí Royal 1D a zárubne**





Interiérové dvere elegantne nerezovými prúžkami

Royal 130-LA3-B

Royal 130-LA3-S

Royal 131

Royal 131-LA1

Výhody interiérových dverí:



a stabilná konštrukcia



á mechanická odolnosť



Jednoduchá údržba



tný design



aj priečne umiestnenie nerezových prúžkov



Jedna z najžiadanejších modelových rád

Royal 131-LA3-B

Royal 131-LA3-S

Royal 132

Royal 132-LA1

Zvoľte si kvalitu a eleganciu pre každý interiér. Či už doma alebo v kancelárii – interiérové

dvere môžu byť funkčné, odolné a ľahko udržiavateľné. Ideálne riešenie pre dvere v kuchyniach sú teda dvere s povrchom. Ma, ktorý nepo, enám fareb, sobením slnečného žiarenia. Tieto dvere sú odolným materiálom CPL sa hodí do súkromných, ako aj v podnikových priestoroch. Sú napr. k, hotely a iné. Štýlové nerezové dvere jednoznačne predstavujú dnešný moderný štýl bývania a vyhovujú súčasnej dobe. Sú ľubovoľným iným štýlu. Hlavný celok tvoria nerezové pružky a dvere PRŮM v povrchoch CPL laminát 3D. Tieto 3D povrchy majú vizuálne vzhľad prírodného dreva, ale aj dotykom je zreteľná 3D štruktúra.



Nerezová kvalita

Odolnosť

Domáce produkty

Royal 134-B-LA2

Royal 134-B-LA2-B

Royal 134-B-LA2-S

Royal 134-B-LA3



Royal 134-B-LA3-B

Royal 134-B-LA3-S

Royal 134-S

Royal 134-S-LA1

Interierové dvere Royal 134 v realizáciách



Royal 134-S-LA2

Royal 134-S-LA2-B

Royal 134-S-LA2-S

Royal 134-S-LA3



Royal 134-S-LA3-B

Royal 134-S-LA3-S

Royal 151

Royal 151-LA1



Royal 151-LA2



Royal 151-LA2-B



Royal 151-LA2-S



Royal 151-LA3



Royal 151-LA3-B



Royal 151-LA3-S



Royal 152



Royal 152-LA1



Royal 152-LA2



Royal 152-LA2-B



Royal 152-LA2-S



Royal 152-LA3



Royal 152-LA3-B



Royal 152-LA3-S



Royal 153



Royal 153-LA1



Royal 153-LA2



Royal 153-LA2-B



Royal 153-LA2-S

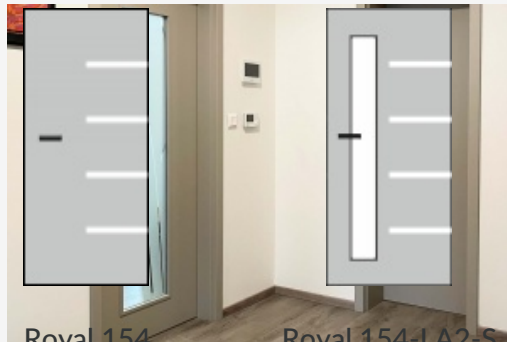


Royal 153-LA3



Royal 153-LA3-B

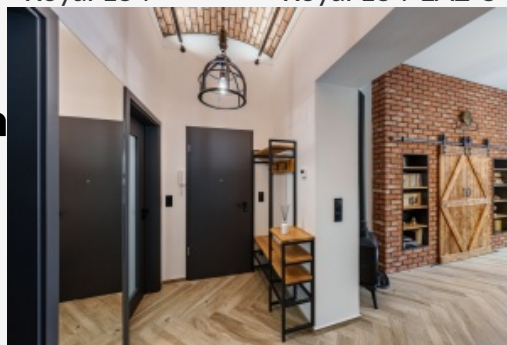
Royal 153-LA3-S



Royal 154

Royal 154-LA2-S

Materiál a farebné prevedenia



CPL laminát

PRÜM

U
d
rc

ecial
resti
ou s

a m
ačky

ých c
ú a

dnými
iku s

Biely lak (9010)

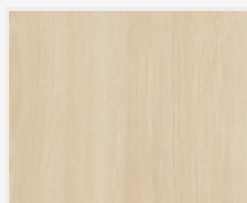
Biela 9016

DVERE PRÜM, s.r.o.

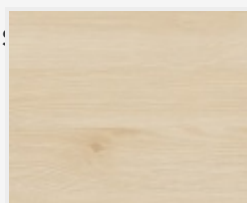
Hodonínska 8436/27

brati:

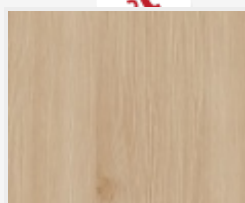
- So 1



Touch dub creme
DA



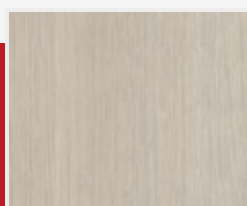
Touch dub creme
DQ



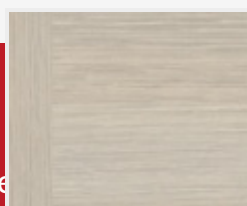
Touch dub natur
DA



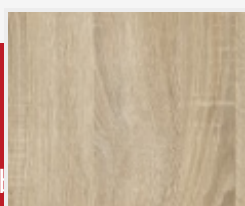
Touch dub natur
DQ



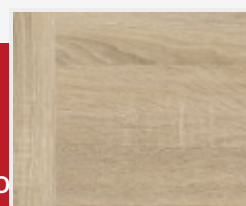
Touch pínia DA



Touch pínia DQ



Touch dub DA



Touch dub DQ

+421 944 501 505

obchod@dvereprum.sk

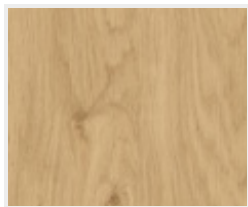
platných zákonov



Touch dub Altholz
DA



Touch dub Altholz
DQ



Touch dub Astig
DA



Touch dub Astig



Touch white DA



Touch white DQ



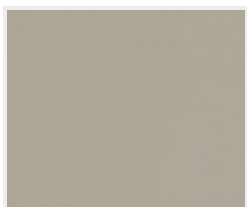
Touch grey DA



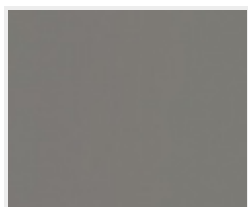
Touch grey DQ



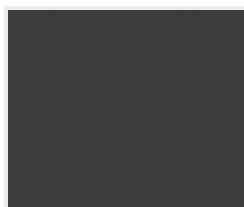
Strieborná sivá
7035



Hodvábna šedá
7044



Prachová šedá
7037



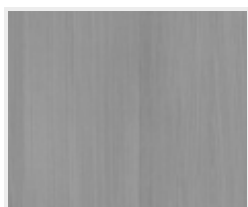
Grafitová šedá
7024



Touch Pearl DA



Touch Pearl DQ



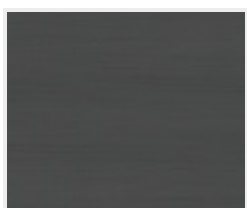
Touch Silva DA



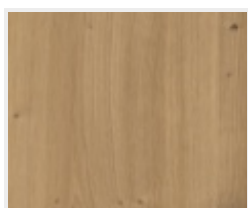
Touch Silva DQ



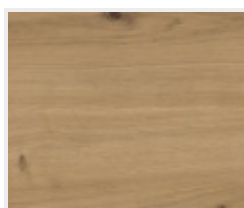
Touch Dark DA



Touch Dark DQ



Touch dub Wild
DA

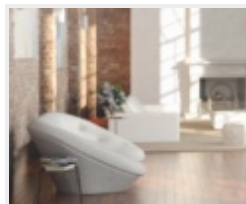


Touch dub Wild
DQ

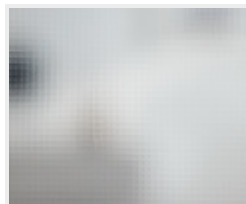
Možnosti presklenia



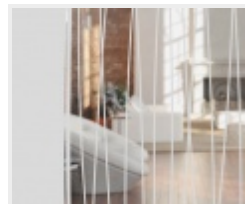
Činčila číra



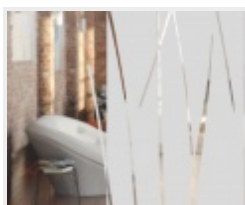
Float



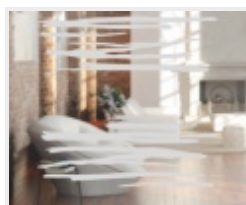
Master-carre



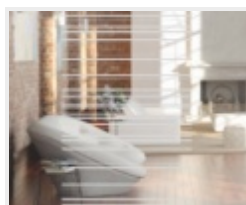
Accordia



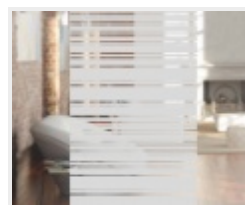
Bambus



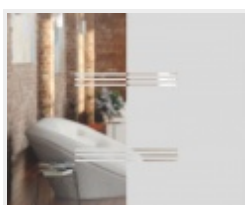
Free



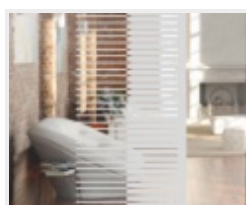
Linea 1



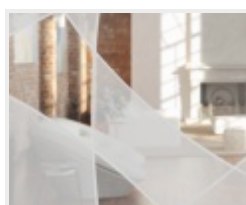
Linea 2



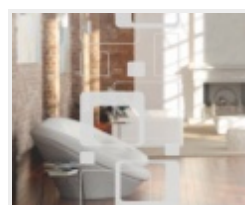
Lineum



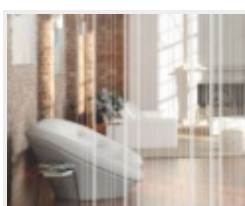
Linus



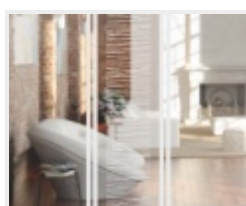
Lipso



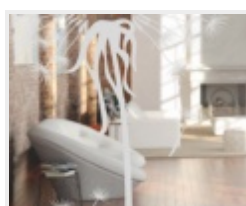
Seventy



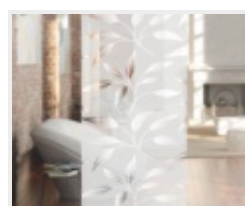
Arpa



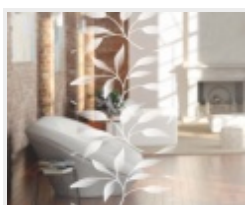
Centro



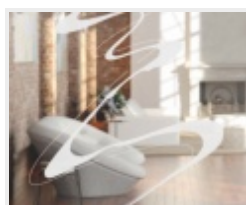
Fiore



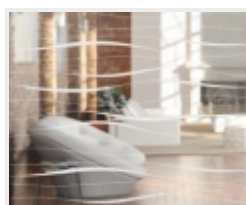
Flora 1



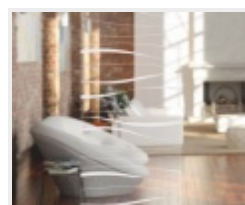
Flora 2



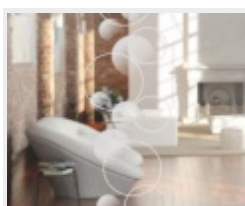
Motus



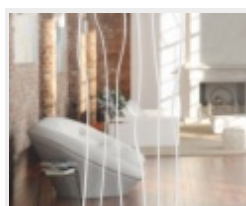
Onda 1



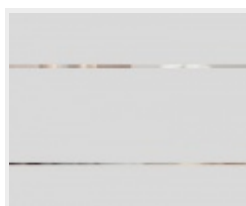
Onda 2



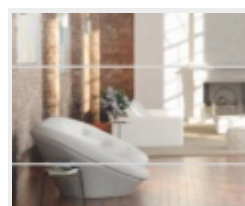
Palla



Sagi



DUO 151-1



DUO 151-2



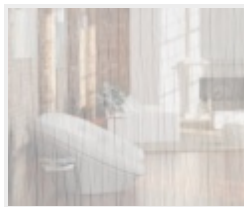
Lino 1



Lino 2



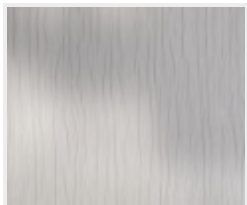
Satináto biele



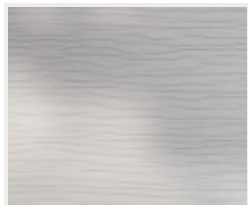
Wood 1 DA



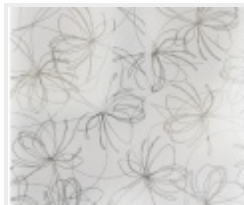
Wood 1 DQ



Wood 2 DA



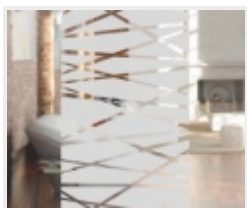
Wood 2 DQ



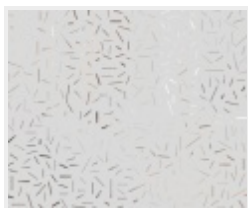
Petali



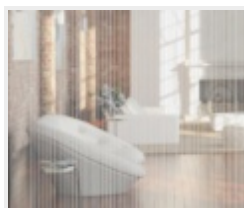
Panno



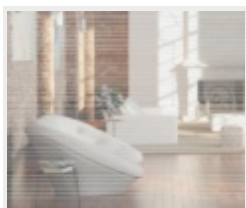
Mikado



Strato

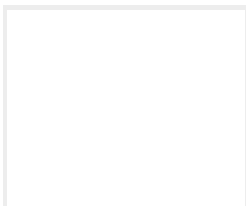


Stripes DA

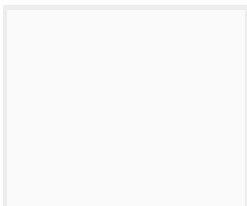


Stripes DQ

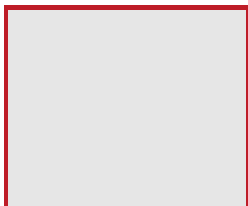
Farebné prevedenie steny



Biela



Šedá 1



Šedá 2



Šedá 3



Šedá 4



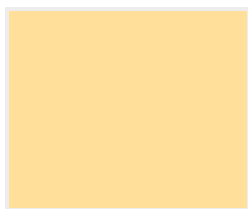
Žltá 1



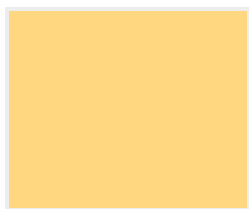
Žltá 2



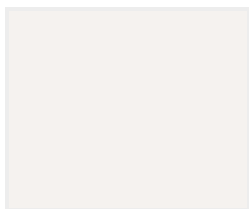
Žltá 3



Žltá 4



Žltá 5



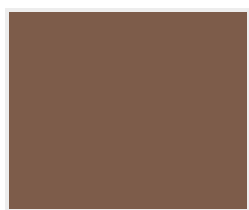
Hnedá 1



Hnedá 2



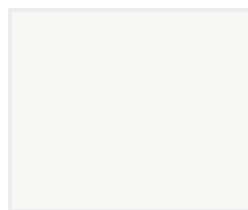
Hnedá 3



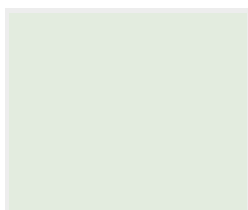
Hnedá 4



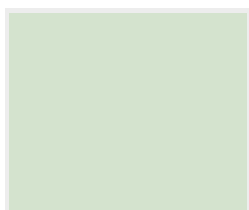
Hnedá 5



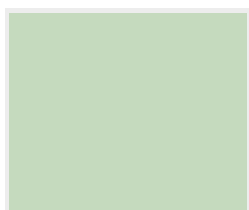
Zelená 1



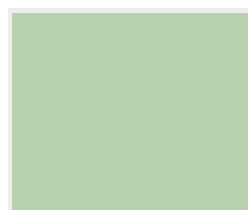
Zelená 2



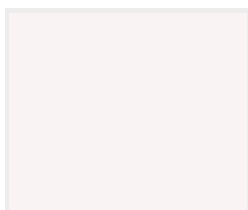
Zelená 3



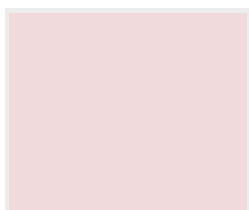
Zelená 4



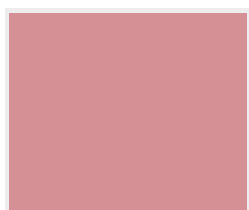
Zelená 5



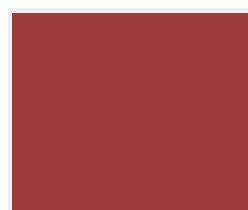
Červená 1



Červená 2



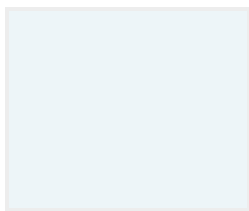
Červená 3



Červená 4



Červená 5



Modrá 1



Modrá 2



Modrá 3



Modrá 4



Modrá 5

Farebné prevedenie podlahy



Dub Markant
(zvislo)



Dub Markant
(priečne)



Dub Markant silk
(zvislo)



Dub Markant silk
(priečne)



Dub Mocca
Rustikal
(zvislo)



Dub Mocca
Rustikal
(priečne)



Dub Trend
(vzor parketa)



Drevená podlaha
svetlá
(zvislo)



Drevená podlaha
svetlá
(priečne)



Drevená podlaha
tmavá
(zvislo)



Drevená podlaha
tmavá
(priečne)



Dlažba
(tmavo šedá)



Dlažba
(svetlo šedá)



Dlažba
(čierna)



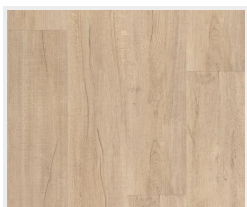
Parkety
(šedé)



Parkety
(dubové)



Betonová podlaha



Dub svetlý
(zvislo)



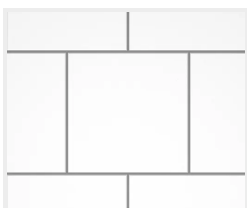
Dub svetlý
(priečne)



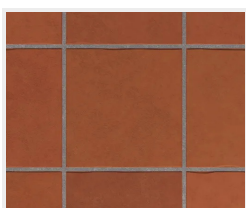
Dub tmavý
(zvislo)



Dub tmavý
(priečne)



Dlažba
(biela)



Dlažba
(terakota)