



Tento obrázok dverí je ilustračný

## Interiérové dvere **Well**

Nudia Vás na interiérových dverách klasické zasklievacie rámčeky? Tak si zvolte dvere z rady Well s jemnou priečkou, ktorá opticky rozdelí sklenenú plochu dverí na viac dielov.

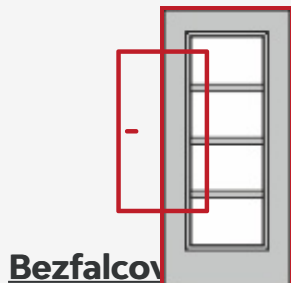
## Možnosti prevedenia

### Ďalšie prevedenia dverí **Well a zárubne**



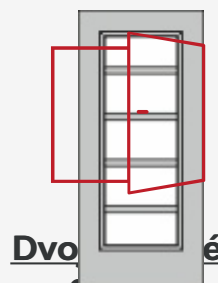
Well 1/0

Well 1/2



Bezfalcov

Well 1/3



Dvo dvere

Well 1/4

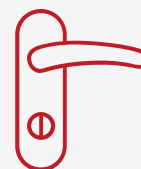


Funkčné dvere

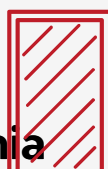
Well L1



Atypické dvere



Príslušenstvo k  
dverám



Zárubne

## Materiál a farebné prevedenia



### CPL laminát

#### CPL laminát s Premiumkante



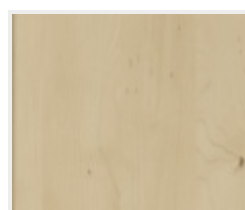
Biely lak (9010)



Biela 9016



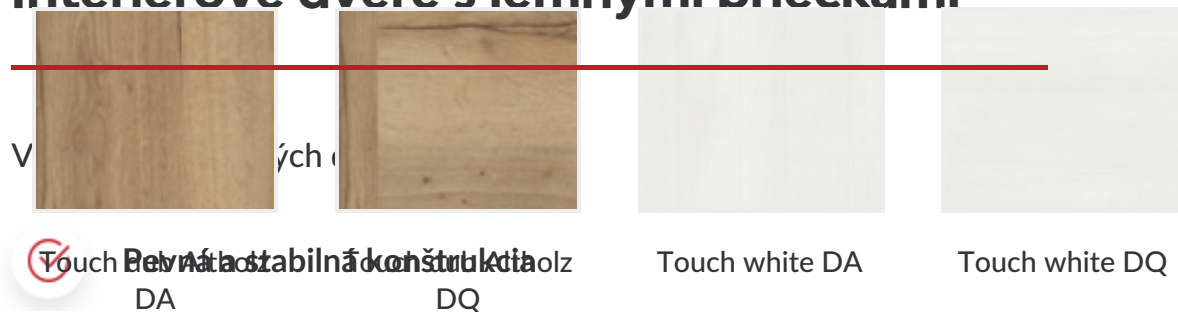
Jaseň biely



Javor PUR



## Interiérové dvere s iemnými priečkami



Nudia Vás na dverách klasické zasklievacie rámečky? Tak si zvolte interiérové dvere z rady

V  
m  
N  
d



Lak



Biela exklusív 9016  
**Nemecká kvalita**



Biela exklusív  
**Dlhá životnosť**



**Zdravotne  
bezpečné produkty**



**RAL nástreky**

Všetky dvere sme schopní nalakovať akoukoľvek farbou zo vzorkovníka RAL, pre viac informácií nás [kontaktujte](#).

## Možnosti presklenia Interiérové dvere Well v **realizáciách**

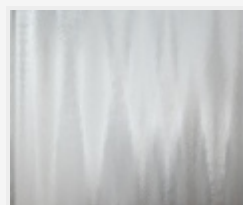


Crepi

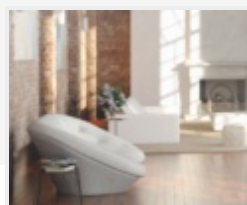
Kathedral



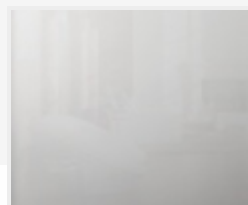
Kôra číra



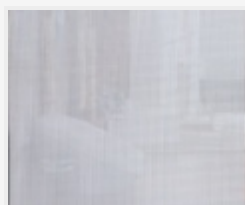
Činčila číra



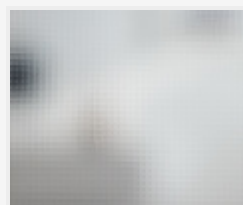
Float



Matelux



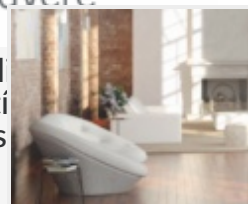
Krizet



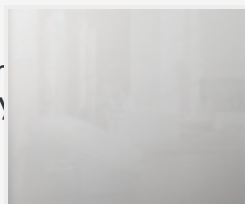
Master-carre



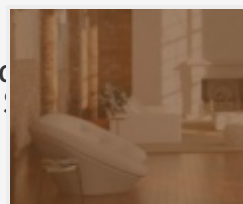
Masterlens



Connex číry



Connex mliečny



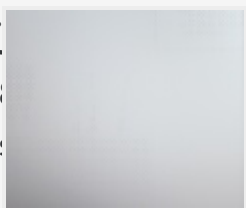
Planibel bronz

**PRÜM**  
Designové dvere

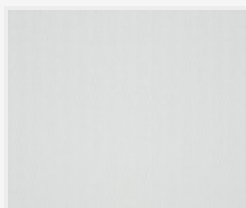
U  
d  
re  
ce  
cial  
rest  
ou s  
ja m  
ačky  
ých d  
ú a  
dnými  
iku s



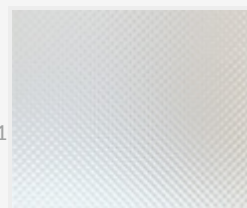
Thela číra



Pavé biele



Screen



Mastersoft

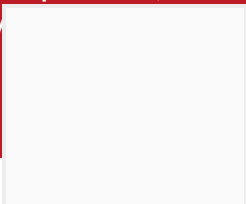


**Farebné prevedenie steny** [obchod@dvereprum.sk](mailto:obchod@dvereprum.sk)

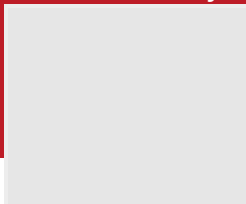
© 2024 [www.dvereprum.sk](http://www.dvereprum.sk), na celý obsah sa vzťahujú autorské práva podľa



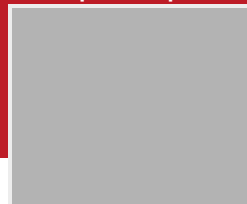
Biela



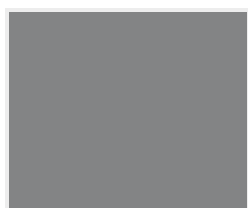
Šedá 1



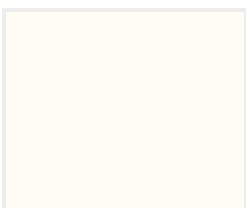
Šedá 2



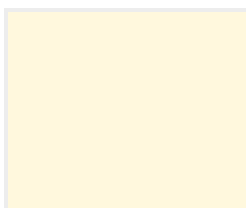
Šedá 3



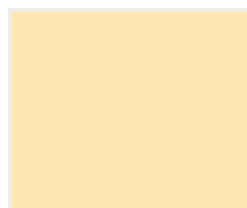
Šedá 4



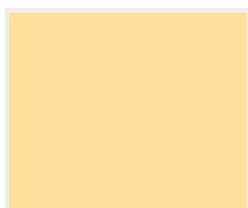
Žltá 1



Žltá 2



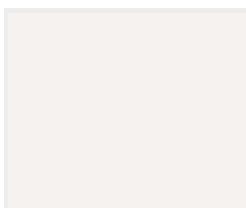
Žltá 3



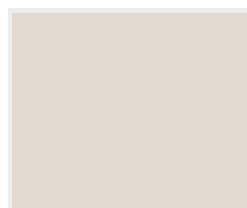
Žltá 4



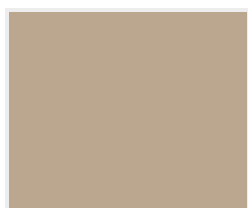
Žltá 5



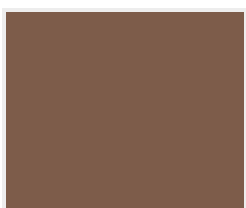
Hnedá 1



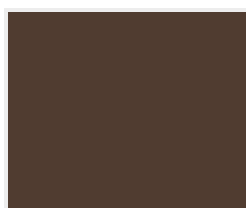
Hnedá 2



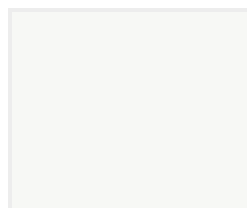
Hnedá 3



Hnedá 4



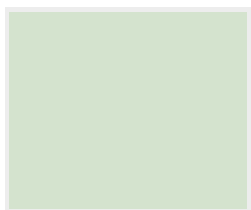
Hnedá 5



Zelená 1



Zelená 2



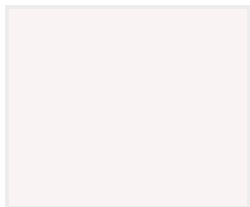
Zelená 3



Zelená 4



Zelená 5



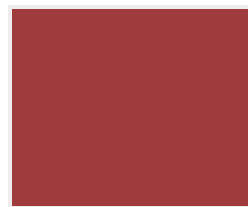
Červená 1



Červená 2



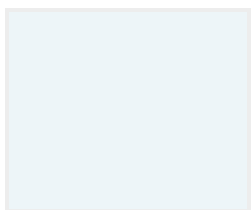
Červená 3



Červená 4



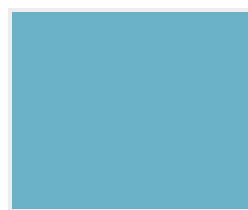
Červená 5



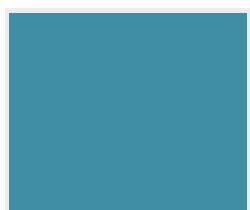
Modrá 1



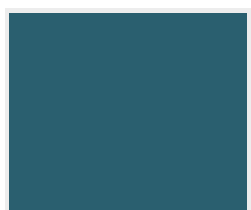
Modrá 2



Modrá 3

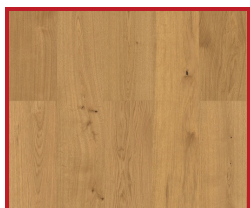


Modrá 4

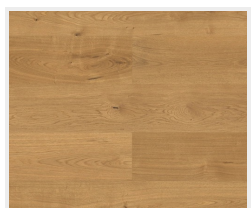


Modrá 5

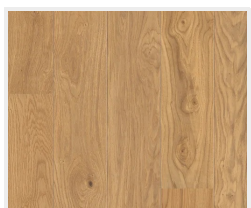
## Farebné prevedenie podlahy



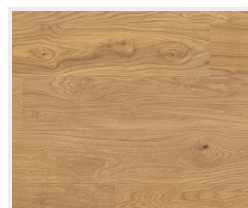
Dub Markant  
(zvislo)



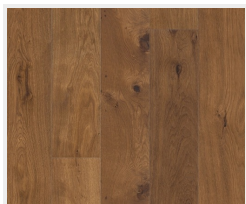
Dub Markant  
(priečne)



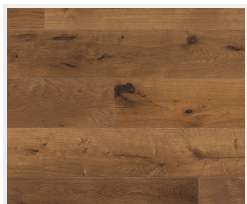
Dub Markant silk  
(zvislo)



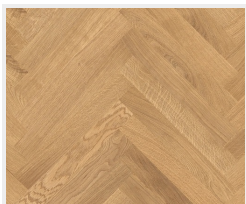
Dub Markant silk  
(priečne)



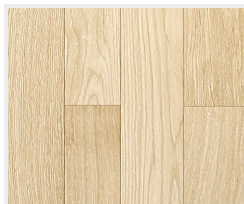
Dub Mocca  
Rustikal  
(zvislo)



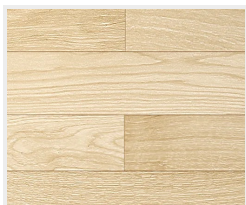
Dub Mocca  
Rustikal  
(priečne)



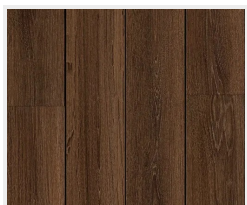
Dub Trend  
(vzor parketa)



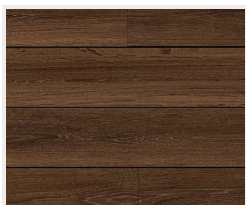
Drevená podlaha  
svetlá  
(zvislo)



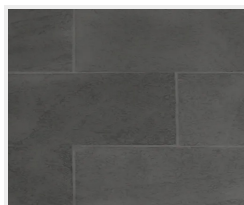
Drevená podlaha  
svetlá  
(priečne)



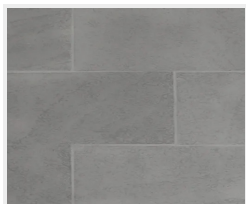
Drevená podlaha  
tmavá  
(zvislo)



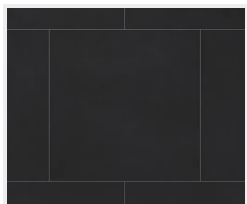
Drevená podlaha  
tmavá  
(priečne)



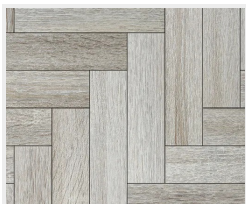
Dlažba  
(tmavo šedá)



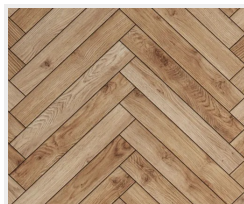
Dlažba  
(svetlo šedá)



Dlažba  
(čierna)



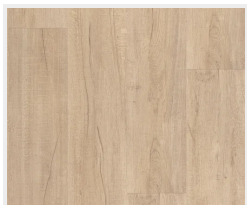
Parkety  
(šedé)



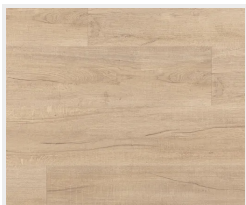
Parkety  
(dubové)



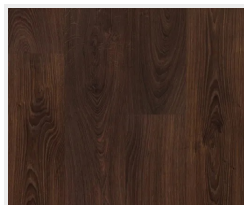
Betonová podlaha



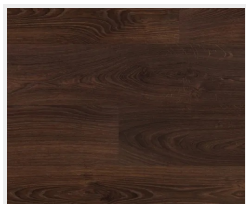
Dub svetlý  
(zvislo)



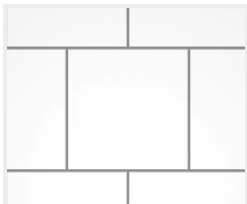
Dub svetlý  
(priečne)



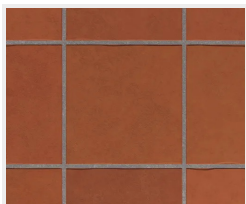
Dub tmavý  
(zvislo)



Dub tmavý  
(priečne)



Dlažba  
(biela)



Dlažba  
(terakota)