



Tento obrázok dverí je ilustračný

Interiérové dvere **Well**

Nudia Vás na interiérových dverách klasické zasklievacie rámčeky? Tak si zvolte dvere z rady Well s jemnou priečkou, ktorá opticky rozdelí sklenenú plochu dverí na viac dielov.

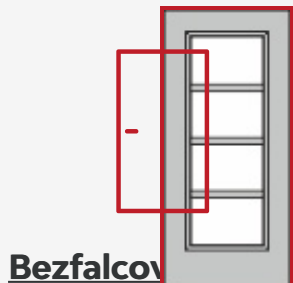
Možnosti prevedenia

Ďalšie prevedenia dverí **Well a zárubne**



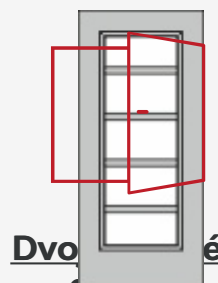
Well 1/0

Well 1/2



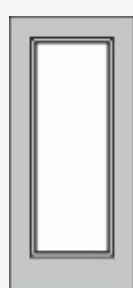
Bezfalcov

Well 1/3



Dvo dvere

Well 1/4

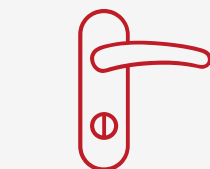


Well L1

Funkčné dvere



Atypické dvere



Príslušenstvo k
dverám

Materiál a farebné prevedenia

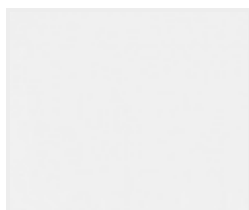


Zárubne

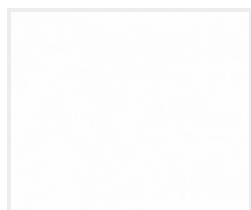


CPL laminát

CPL laminát s Premiumkante



Biely lak (9010)



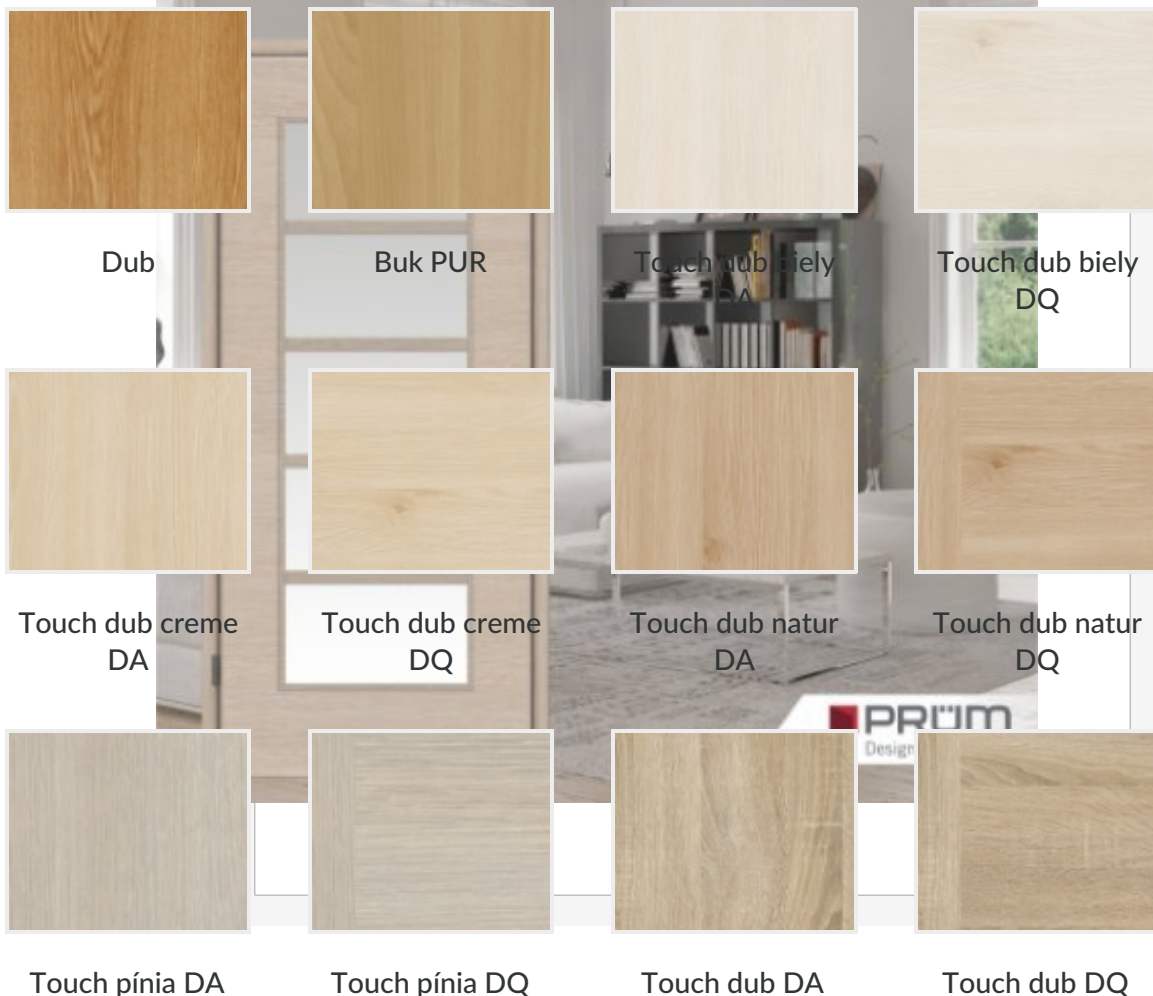
Biela 9016



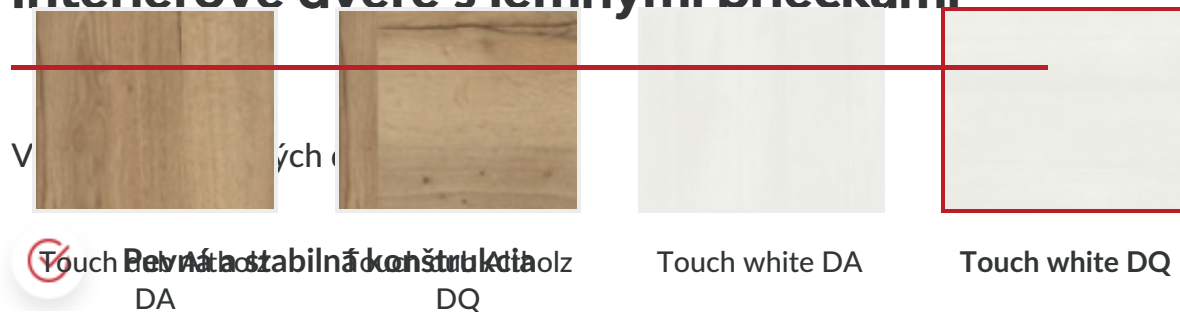
Jaseň biely



Javor PUR



Interiérové dvere s iemnými priečkami



Nudia Vás na dverách klasické zasklievacie rámečky? Tak si zvolte interiérové dvere z rady

V
m
N
d



Lak



Biela exklusív 9016
Nemecká kvalita



Biela exklusív
Dlhá životnosť



**Zdravotne
bezpečné produkty**



RAL nástreky

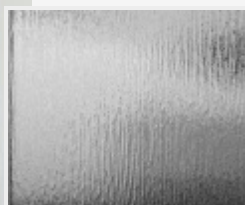
Všetky dvere sme schopní nalakovať akoukoľvek farbou zo vzorkovníka RAL, pre viac informácií nás [kontaktujte](#).

Možnosti presklenia Interiérové dvere Well v **realizáciách**

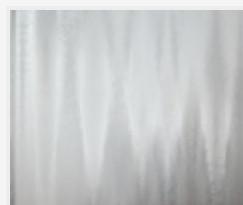


Crepí

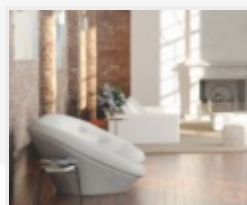
Kathedral



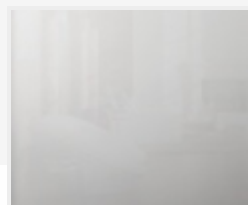
Kôra číra



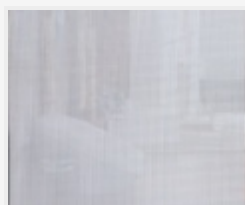
Činčila číra



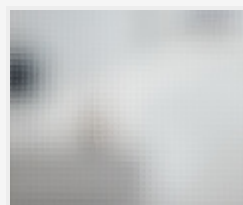
Float



Matelux



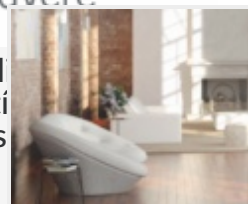
Krizet



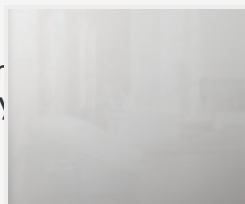
Master-carre



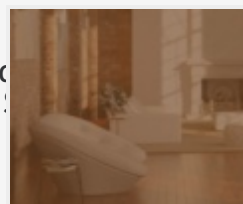
Masterlens



Connex číry



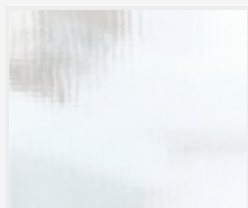
Connex mliečny



Planibel bronz

PRÜM
Designové dvere

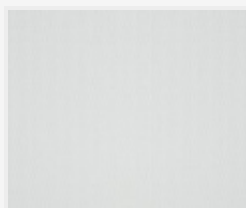
U
d
re
ce
cial
rest
ou s
ja m
ačky
ých d
ú a
dnými
iku s



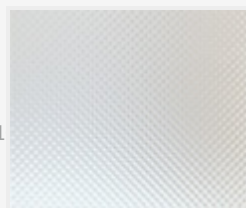
Thela číra



Pavé biele



Screen



Mastersoft

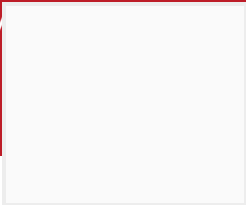


Farebné prevedenie steny obchod@dvereprum.sk

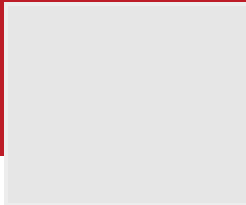
© 2024 www.dvereprum.sk, na celý obsah sa vzťahujú autorské práva podľa



Biela



Šedá 1



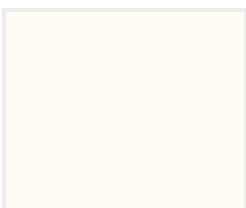
Šedá 2



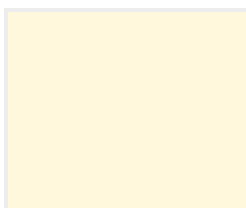
Šedá 3



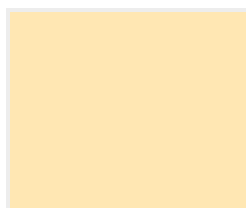
Šedá 4



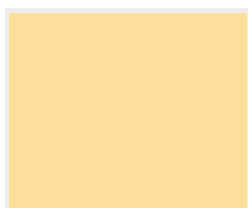
Žltá 1



Žltá 2



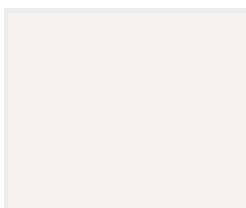
Žltá 3



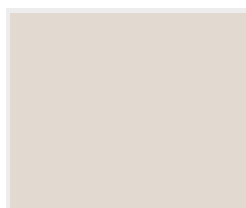
Žltá 4



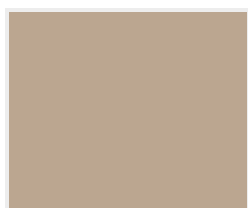
Žltá 5



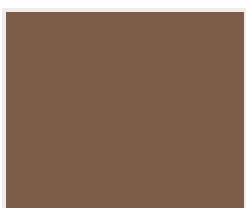
Hnedá 1



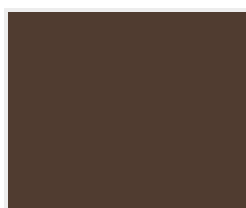
Hnedá 2



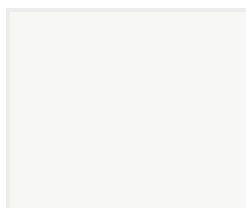
Hnedá 3



Hnedá 4



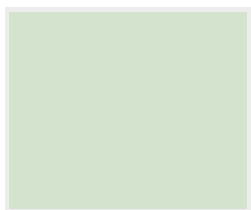
Hnedá 5



Zelená 1



Zelená 2



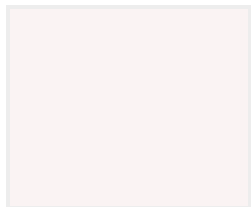
Zelená 3



Zelená 4



Zelená 5



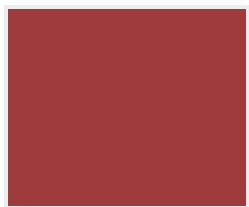
Červená 1



Červená 2



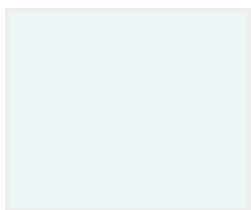
Červená 3



Červená 4



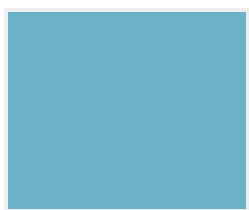
Červená 5



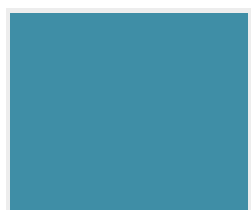
Modrá 1



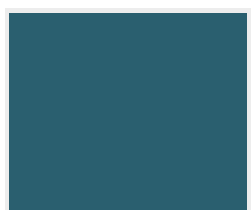
Modrá 2



Modrá 3

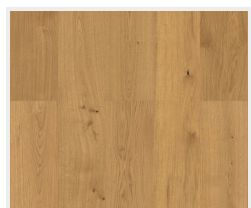


Modrá 4

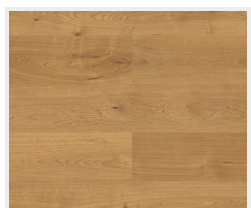


Modrá 5

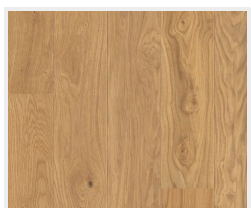
Farebné prevedenie podlahy



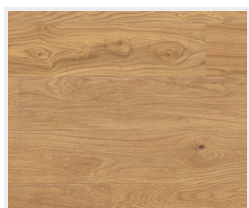
Dub Markant
(zvislo)



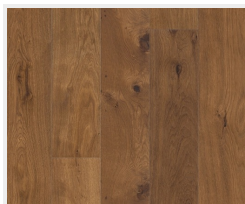
Dub Markant
(priečne)



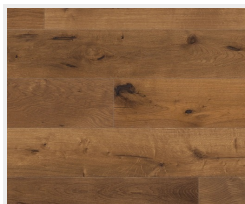
Dub Markant silk
(zvislo)



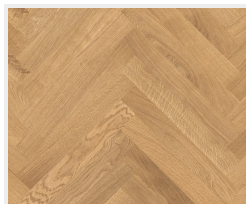
Dub Markant silk
(priečne)



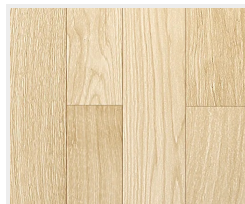
Dub Mocca
Rustikal
(zvislo)



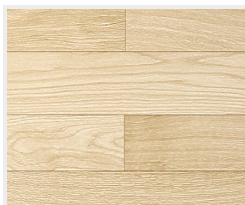
Dub Mocca
Rustikal
(priečne)



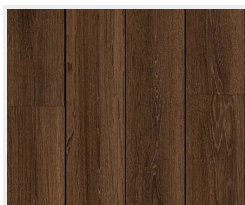
Dub Trend
(vzor parketa)



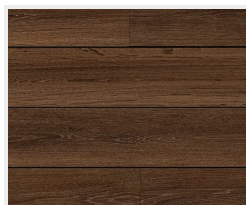
Drevená podlaha
svetlá
(zvislo)



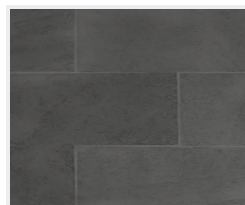
Drevená podlaha
svetlá
(priečne)



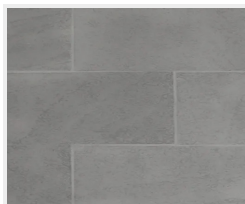
Drevená podlaha
tmavá
(zvislo)



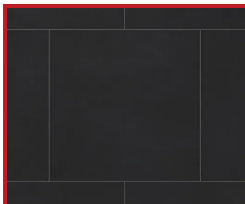
Drevená podlaha
tmavá
(priečne)



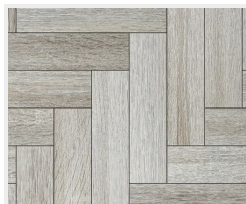
Dlažba
(tmavo šedá)



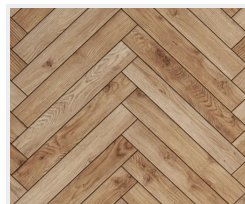
Dlažba
(svetlo šedá)



Dlažba
(čierna)



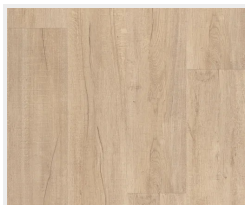
Parkety
(šedé)



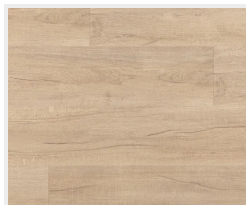
Parkety
(dubové)



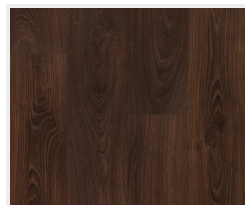
Betonová podlaha



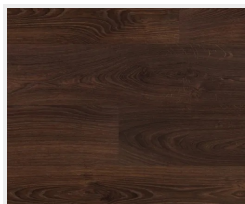
Dub svetlý
(zvislo)



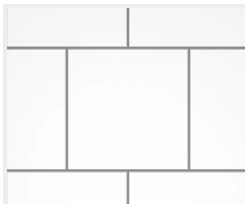
Dub svetlý
(priečne)



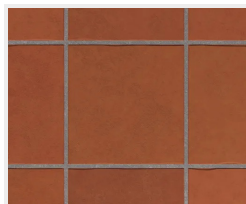
Dub tmavý
(zvislo)



Dub tmavý
(priečne)



Dlažba
(biela)



Dlažba
(terakota)