

Tento obrázok dverí je ilustračný

Interiérové dvere **Well**

Nudia Vás na interiérových dverách klasické zasklievacie rámčeky? Tak si zvolte dvere z rady Well s jemnou priečkou, ktorá opticky rozdelí sklenenú plochu dverí na viac dielov.

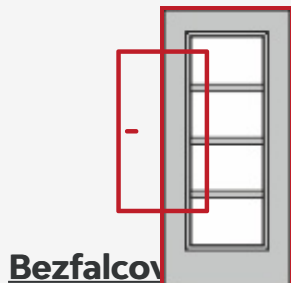
Možnosti prevedenia

Ďalšie prevedenia dverí **Well a zárubne**



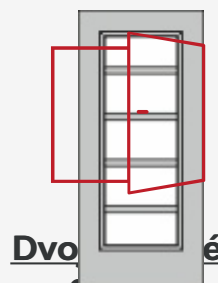
Well 1/0

Well 1/2



Bezfalcov

Well 1/3



Dvo dvere

Well 1/4

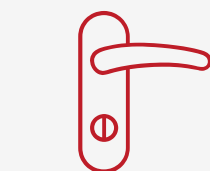


Well L1

Funkčné dvere



Atypické dvere



Príslušenstvo k
dverám



Zárubne

Materiál a farebné prevedenia

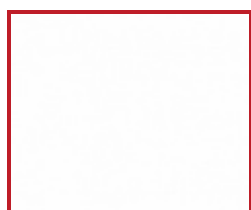


CPL laminát

CPL laminát s Premiumkante



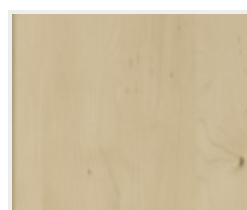
Biely lak (9010)



Biela 9016



Jaseň biely



Javor PUR



Dub



Buk PUR



Touch dub biely
DA



Touch dub biely
DQ



Touch dub creme
DA



Touch dub creme
DQ



Touch dub natur
DA



Touch dub natur
DQ



Touch pínia DA



Touch pínia DQ

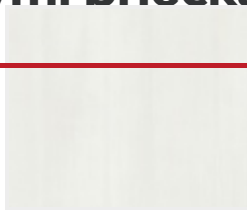


Touch dub DA



Touch dub DQ

Interiérové dvere s iemnými priečkami



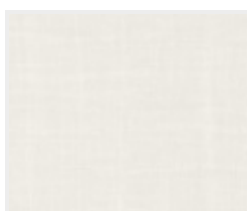
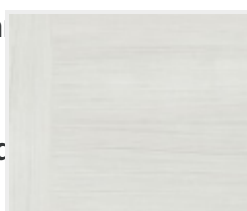
Touch white DA



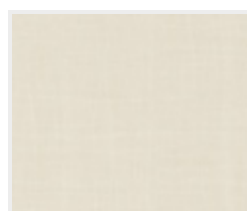
Touch white DQ



Prvá stabilná konštrukcia
DA DQ



Karo white



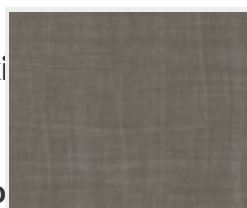
Karo beige



Touch grey DA

Touch grey DQ

Jediny model dverí s medzisklenou priečkou



Karo grey

Karo dark

Nudia Vás na dverách klasické zasklievacie rámečky? Tak si zvolte interiérové dvere z rady

V
m
N
d



Lak



Biela exklusív 9016
Nemecká kvalita



Biela exklusív
Dlhá životnosť



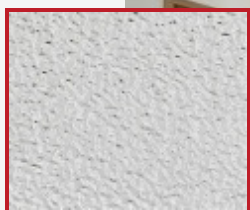
**Zdravotne
bezpečné produkty**



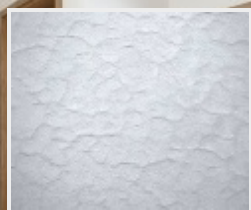
RAL nástreky

Všetky dvere sme schopní nalakovať akoukoľvek farbou zo vzorkovníka RAL, pre viac informácií nás [kontaktujte](#).

Možnosti presklenia Interiérové dvere Well v **realizáciách**



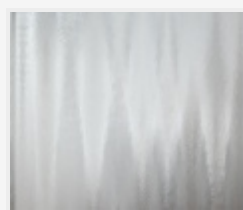
Crepí



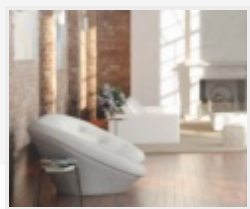
Kathedral



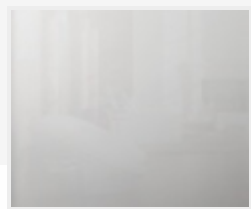
Kôra číra



Činčila číra



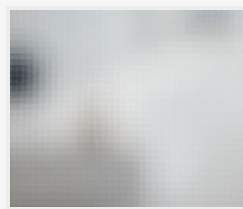
Float



Matelux



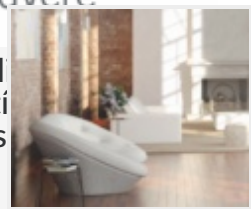
Krizet



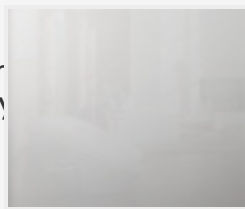
Master-carre



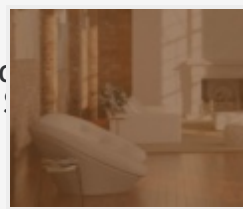
Masterlens



Connex číry



Connex mliečny



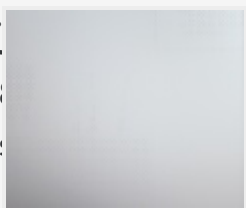
Planibel bronz

PRÜM
Designové dvere

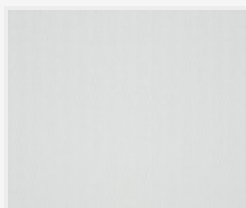
U
d
re
ce
cial
rest
ou s
ja m
ačky
ých d
ú a
dnými
iku s



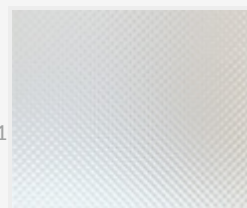
Thela číra



Pavé biele



Screen



Mastersoft

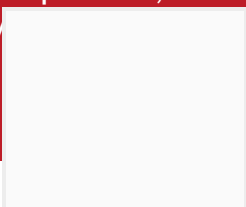


Farebné prevedenie steny obchod@dvereprum.sk

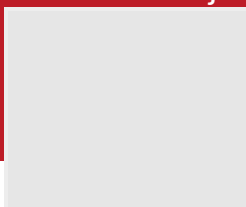
© 2024 www.dvereprum.sk, na celý obsah sa vzťahujú autorské práva podľa



Biela



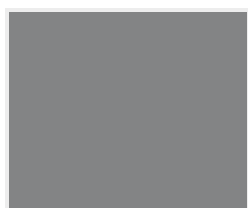
Šedá 1



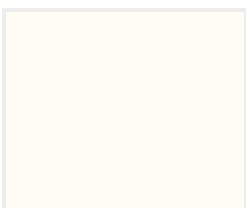
Šedá 2



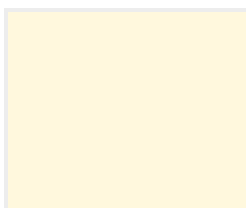
Šedá 3



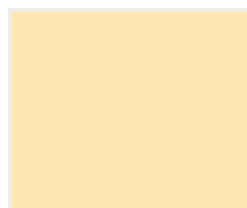
Šedá 4



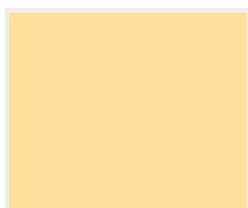
Žltá 1



Žltá 2



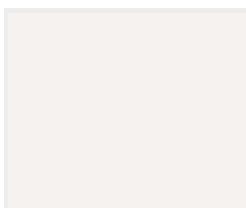
Žltá 3



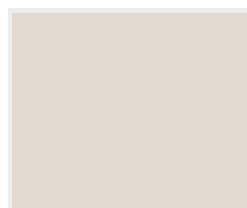
Žltá 4



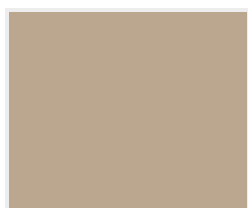
Žltá 5



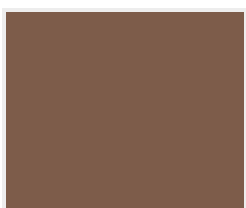
Hnedá 1



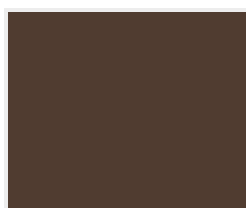
Hnedá 2



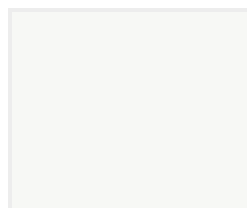
Hnedá 3



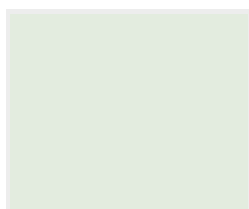
Hnedá 4



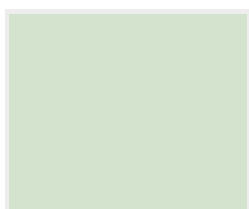
Hnedá 5



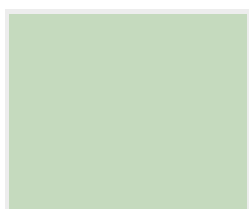
Zelená 1



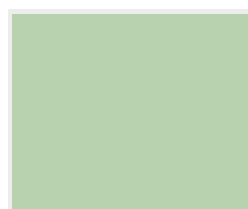
Zelená 2



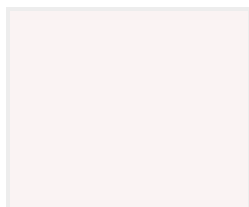
Zelená 3



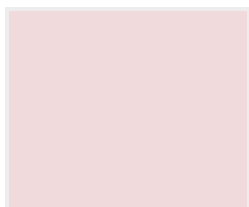
Zelená 4



Zelená 5



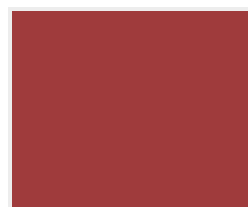
Červená 1



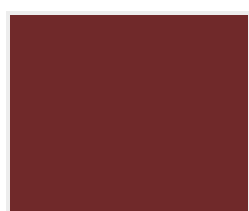
Červená 2



Červená 3



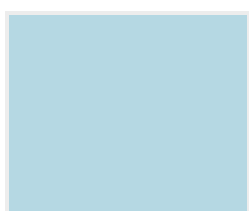
Červená 4



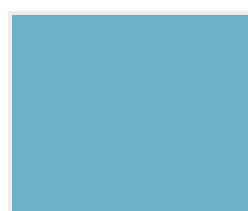
Červená 5



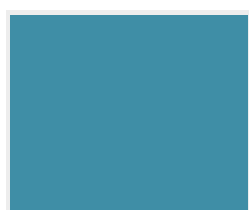
Modrá 1



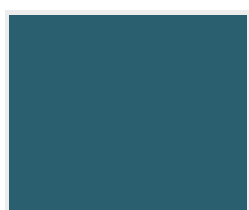
Modrá 2



Modrá 3

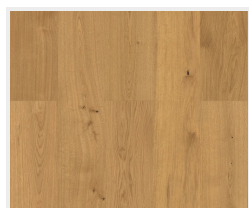


Modrá 4

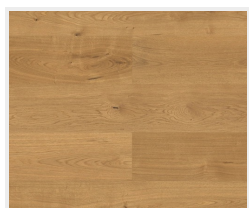


Modrá 5

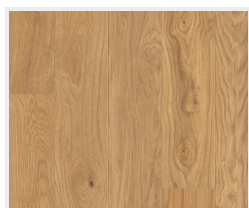
Farebné prevedenie podlahy



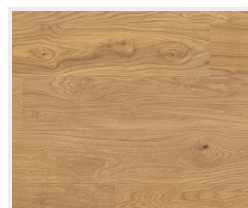
Dub Markant
(zvislo)



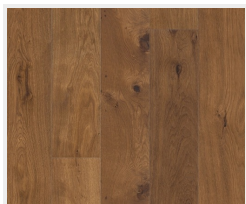
Dub Markant
(priečne)



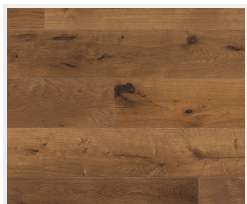
Dub Markant silk
(zvislo)



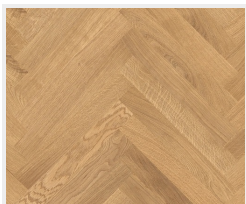
Dub Markant silk
(priečne)



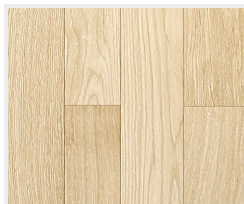
Dub Mocca
Rustikal
(zvislo)



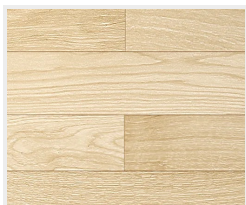
Dub Mocca
Rustikal
(priečne)



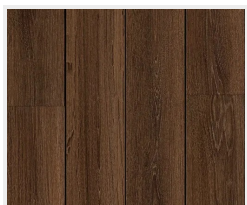
Dub Trend
(vzor parketa)



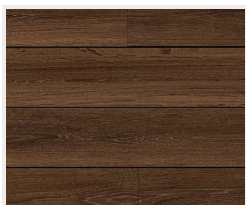
Drevená podlaha
svetlá
(zvislo)



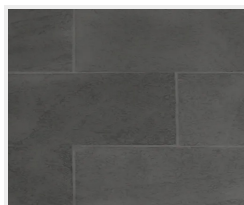
Drevená podlaha
svetlá
(priečne)



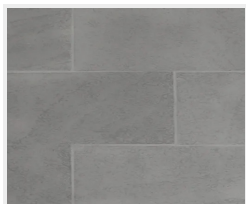
Drevená podlaha
tmavá
(zvislo)



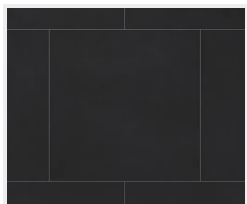
Drevená podlaha
tmavá
(priečne)



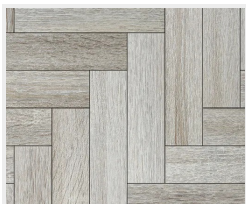
Dlažba
(tmavo šedá)



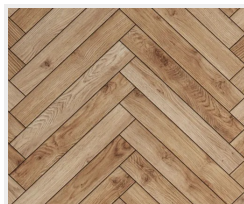
Dlažba
(svetlo šedá)



Dlažba
(čierna)



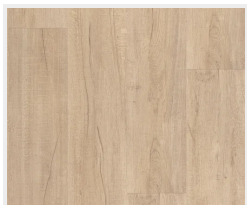
Parkety
(šedé)



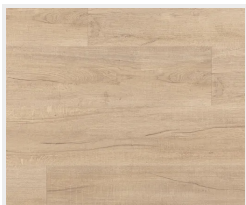
Parkety
(dubové)



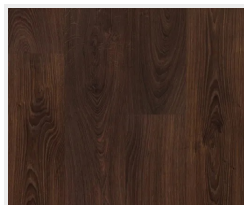
Betonová podlaha



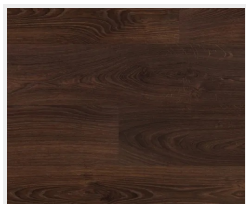
Dub svetlý
(zvislo)



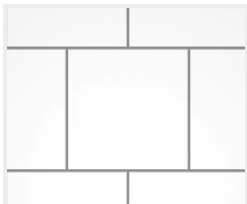
Dub svetlý
(priečne)



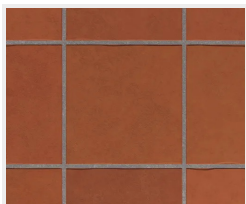
Dub tmavý
(zvislo)



Dub tmavý
(priečne)



Dlažba
(biela)



Dlažba
(terakota)