



Tento obrázok dverí je ilustračný

## Interiérové dvere **Well**

Nudia Vás na interiérových dverách klasické zasklievacie rámčeky? Tak si zvolte dvere z rady Well s jemnou priečkou, ktorá opticky rozdelí sklenenú plochu dverí na viac dielov.

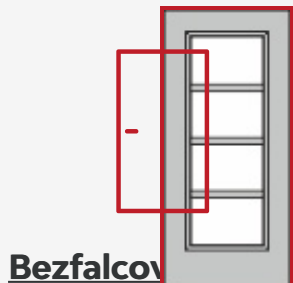
## Možnosti prevedenia

### Ďalšie prevedenia dverí **Well a zárubne**



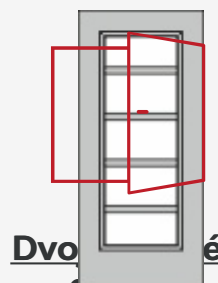
Well 1/0

Well 1/2



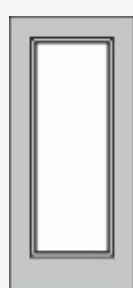
Bezfalcov

Well 1/3



Dvo

Well 1/4

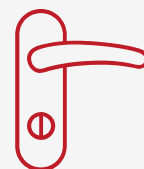


Well L1

Funkčné dv



Atypické dv



Príslušenstvo k dverám



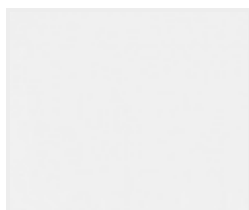
Zárubne

## Materiál a farebné prevedenia

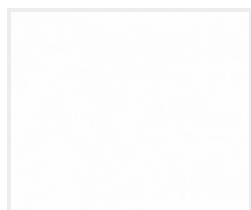


### CPL laminát

#### CPL laminát s Premiumkante



Biely lak (9010)



Biela 9016



Jaseň biely



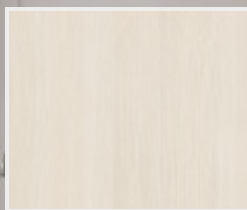
Javor PUR



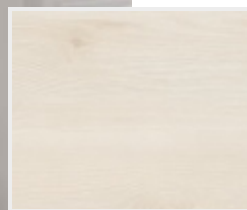
Dub



Buk PUR



Touch dub biely  
DA



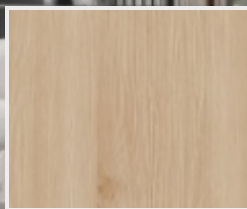
Touch dub biely  
DQ



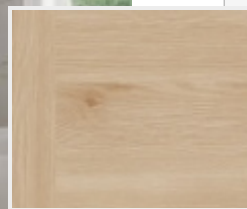
Touch dub creme  
DA



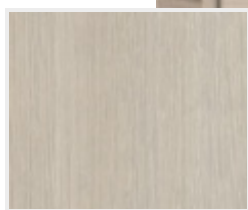
Touch dub creme  
DQ



Touch dub natur  
DA



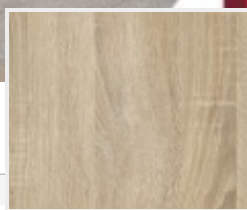
Touch dub natur  
DQ



Touch pínia DA



Touch pínia DQ



Touch dub DA

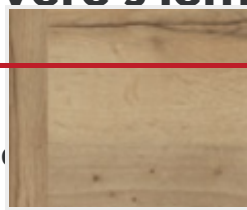


Touch dub DQ

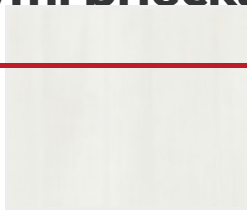
## Interiérové dvere s iemnými priečkami



V



ých



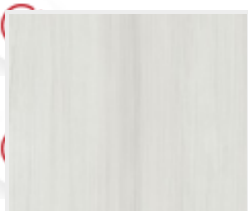
Touch white DA



Touch white DQ



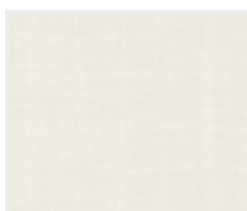
Prvá stabilná konštrukcia  
Touch dub DA Touch dub DQ



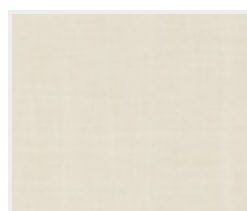
cha



á úc



Karo white



Karo beige



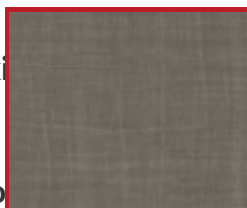
Touch grey DA

Touch grey DQ

Jediny model dverí s medzisklenou priečkou



maxi



mo

e dverného krídla -model Well L1

Karo grey

Karo dark

Nudia Vás na dverách klasické zasklievacie rámčeky? Tak si zvolte interiérové dvere z rady

V  
m  
N  
d



Lak



Biela exklusív 9016  
**Nemecká kvalita**



Biela exklusív  
**Dlhá životnosť**



**Zdravotne  
bezpečné produkty**



**RAL nástreky**

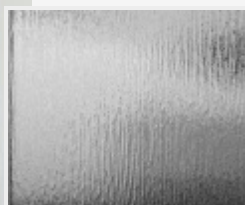
Všetky dvere sme schopní nalakovať akoukoľvek farbou zo vzorkovníka RAL, pre viac informácií nás [kontaktujte](#).

## Možnosti presklenia Interiérové dvere Well v **realizáciách**

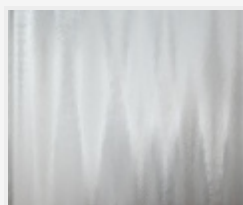


Crepí

Kathedral



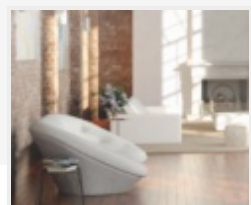
Kôra číra



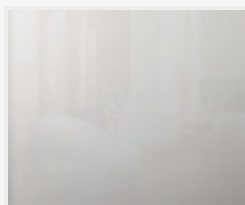
Činčila číra



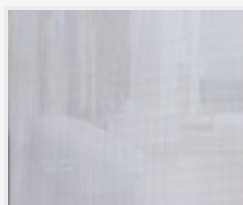
Činčila bronz



Float



Matelux



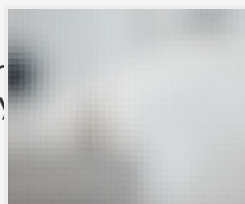
Krizet



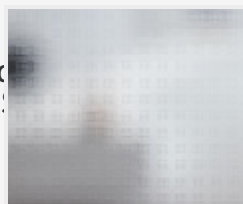
Masterlitrál



Masterlinea



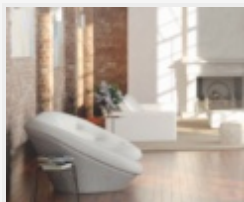
Master-carre



Masterlens

**PRÜM**  
Designové dvere

U  
d  
r  
ce  
cial  
rest  
ou s  
i a m  
ačky  
ých d  
ú a  
dnými  
iku s



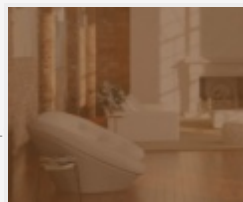
Connex číry



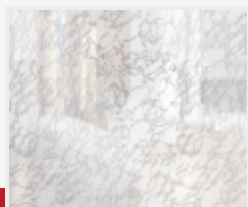
Connex mliečny



Uadi biele



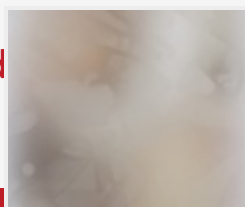
Planibel bronz



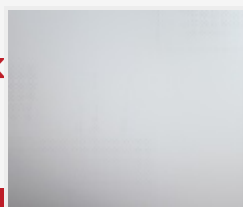
Delta číra



Thela číra



Sílka biely



Pavé biele

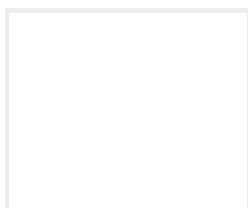


Screen

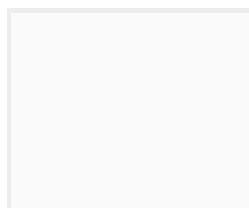


Mastersoft

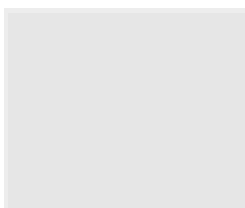
## Farebné prevedenie steny



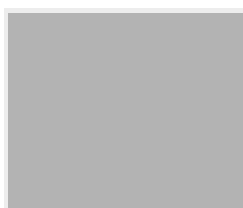
Biela



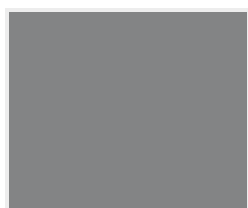
Šedá 1



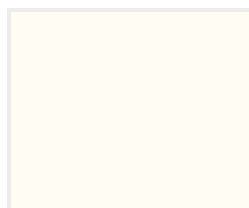
Šedá 2



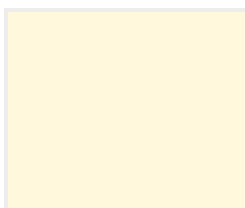
Šedá 3



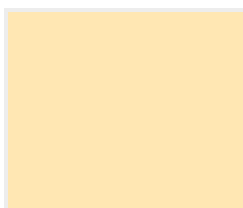
Šedá 4



Žltá 1



Žltá 2



Žltá 3



Žltá 4



Žltá 5



Hnedá 1



Hnedá 2



Hnedá 3



Hnedá 4



Hnedá 5



Zelená 1



Zelená 2



Zelená 3



Zelená 4



Zelená 5



Červená 1



Červená 2



Červená 3



Červená 4



Červená 5



Modrá 1



Modrá 2



Modrá 3

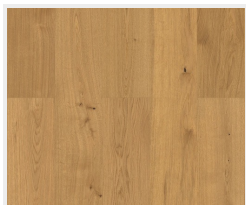


Modrá 4

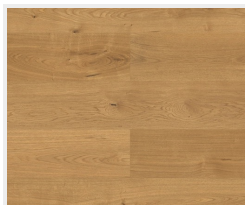


Modrá 5

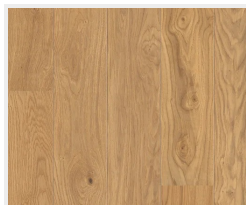
## Farebné prevedenie podlahy



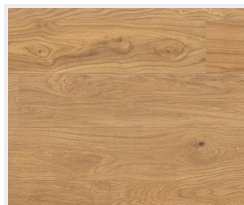
Dub Markant  
(zvislo)



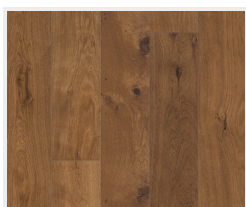
Dub Markant  
(priečne)



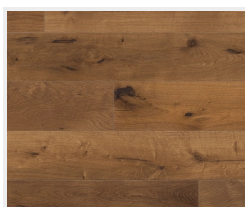
Dub Markant silk  
(zvislo)



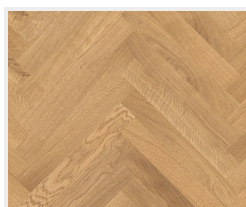
Dub Markant silk  
(priečne)



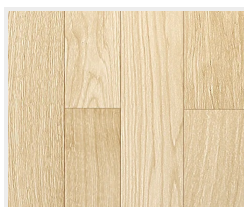
Dub Mocca  
Rustikal  
(zvislo)



Dub Mocca  
Rustikal  
(priečne)



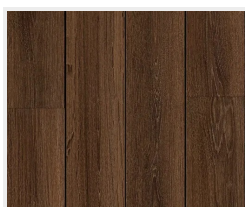
Dub Trend  
(vzor parketa)



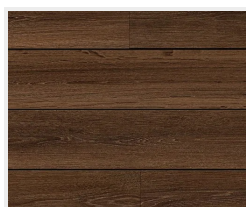
Drevená podlaha  
svetlá  
(zvislo)



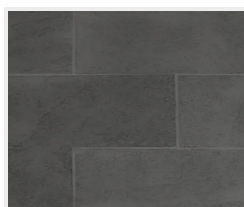
Drevená podlaha  
svetlá  
(priečne)



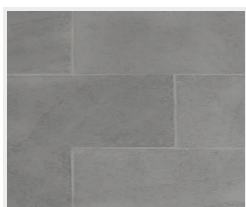
Drevená podlaha  
tmavá  
(zvislo)



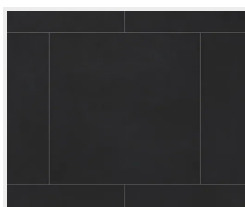
Drevená podlaha  
tmavá  
(priečne)



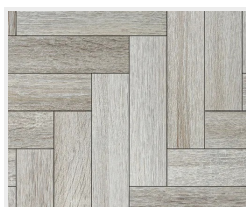
Dlažba  
(tmavo šedá)



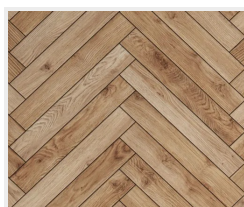
Dlažba  
(svetlo šedá)



Dlažba  
(čierna)



Parkety  
(šedé)



Parkety  
(dubové)



Betonová podlaha



Dub svetlý  
(zvislo)



Dub svetlý  
(priečne)



Dub tmavý  
(zvislo)



Dub tmavý  
(priečne)



Dlažba  
(biela)



Dlažba  
(terakota)