



Tento obrázok dverí je ilustračný

## Interiérové dvere **Well**

Nudia Vás na interiérových dverách klasické zasklievacie rámčeky? Tak si zvolte dvere z rady Well s jemnou priečkou, ktorá opticky rozdelí sklenenú plochu dverí na viac dielov.

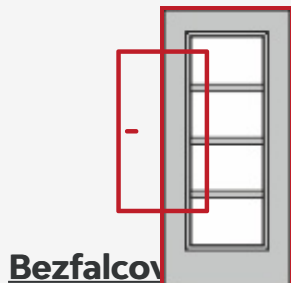
## Možnosti prevedenia

### Ďalšie prevedenia dverí **Well a zárubne**



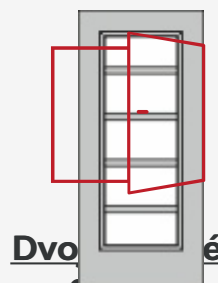
Well 1/0

Well 1/2



Bezfalcov

Well 1/3



Dvo dvere

Well 1/4

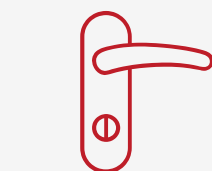


Well L1

Funkčné dvere



Atypické dvere



Príslušenstvo k  
dverám



Zárubne

## Materiál a farebné prevedenia



### CPL laminát

#### CPL laminát s Premiumkante



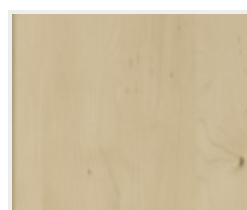
Biely lak (9010)



Biela 9016



Jaseň biely



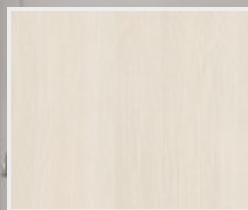
Javor PUR



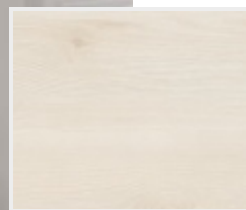
Dub



Buk PUR



Touch dub biely  
DA



Touch dub biely  
DQ



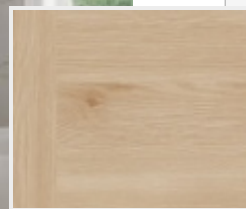
Touch dub creme  
DA



Touch dub creme  
DQ



Touch dub natur  
DA



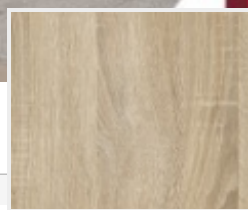
Touch dub natur  
DQ



Touch pínia DA



Touch pínia DQ

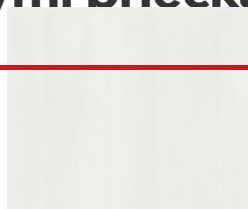


Touch dub DA

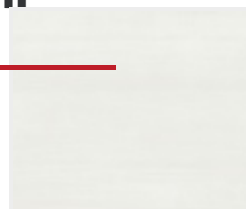


Touch dub DQ

## Interiérové dvere s iemnými priečkami



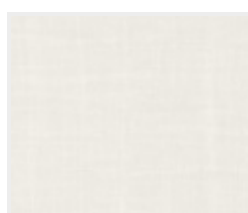
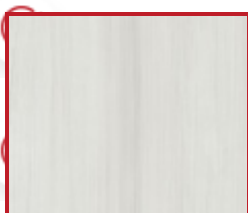
Touch white DA



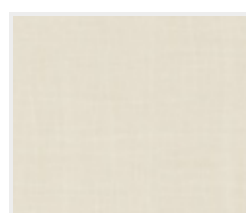
Touch white DQ



Touch dub DA  
Touch dub DQ



Karo white



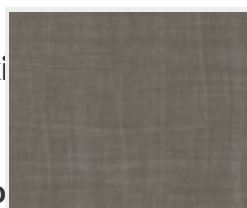
Karo beige



Touch grey DA

Touch grey DQ

### Jedlý model dverí s medzisklenou priečkou



Karo grey

Karo dark

Nudia Vás na dverách klasické zasklievacie rámečky? Tak si zvolte interiérové dvere z rady

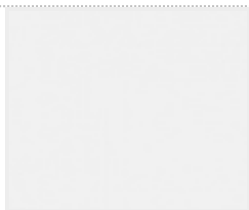
V  
m  
N  
d



Lak



Biela exkluzív 9016  
**Nemecká kvalita**



Biela exkluzív  
**Dlhá životnosť**



**Zdravotne  
bezpečné produkty**



**RAL nástreky**

Všetky dvere sme schopní nalakovať akoukoľvek farbou zo vzorkovníka RAL, pre viac informácií nás [kontaktujte](#).

## Možnosti presklenia Interiérové dvere Well v **realizáciách**



Crepi

Kathedral



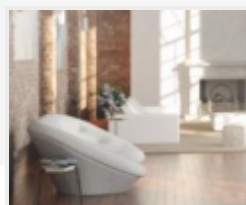
Kôra číra



Činčila číra



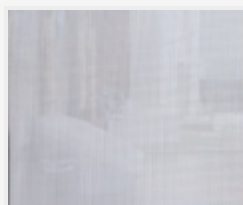
Činčila bronz



Float



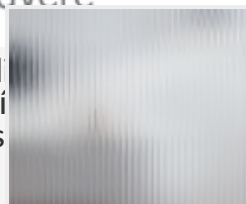
Matelux



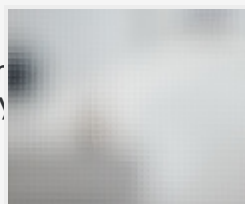
Krizet



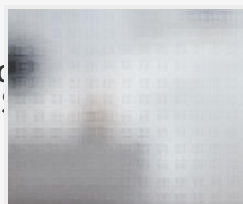
Masterlitrál



Masterlinea



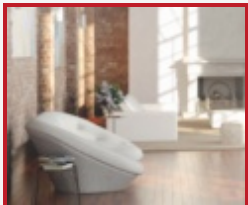
Master-carre



Masterlens

**PRÜM**  
Designové dvere

U  
d  
r  
ce  
Special  
restit  
ou s  
ja m  
ačky  
ých d  
ú a  
dnými  
iku s



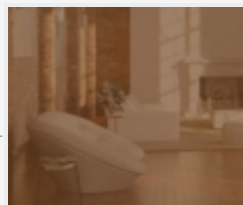
Connex číry



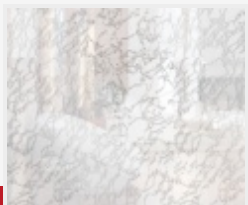
Connex mliečny



Uadi biele



Planibel bronz



Delta číra



Thela číra



Silk biely



Pavé biele

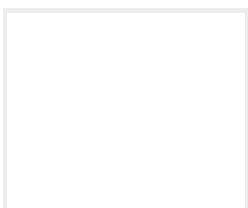


Screen

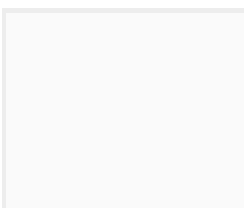


Mastersoft

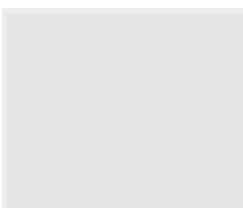
## Farebné prevedenie steny



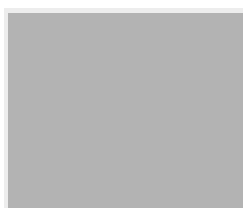
Biela



Šedá 1



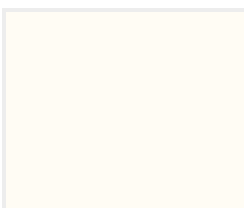
Šedá 2



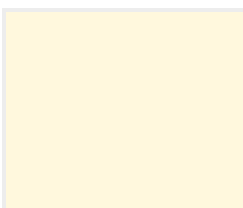
Šedá 3



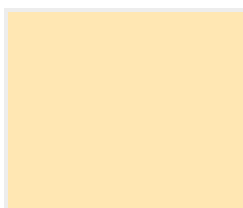
Šedá 4



Žltá 1



Žltá 2



Žltá 3



Žltá 4



Žltá 5



Hnedá 1



Hnedá 2



Hnedá 3



Hnedá 4



Hnedá 5



Zelená 1



Zelená 2



Zelená 3



Zelená 4



Zelená 5



Červená 1



Červená 2



Červená 3



Červená 4



Červená 5



Modrá 1



Modrá 2



Modrá 3



Modrá 4



Modrá 5

## Farebné prevedenie podlahy



Dub Markant  
(zvislo)



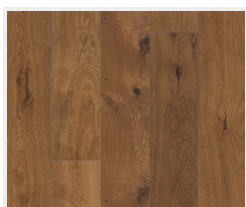
Dub Markant  
(priečne)



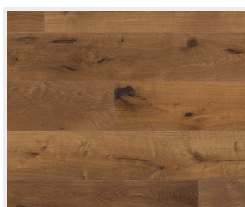
Dub Markant silk  
(zvislo)



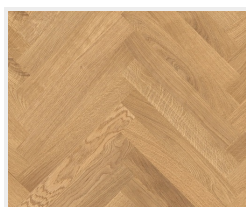
Dub Markant silk  
(priečne)



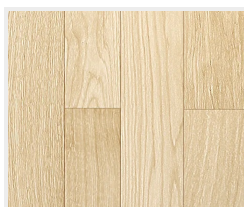
Dub Mocca  
Rustikal  
(zvislo)



Dub Mocca  
Rustikal  
(priečne)



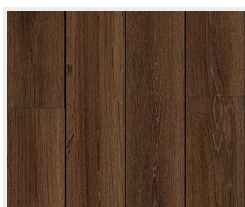
Dub Trend  
(vzor parketa)



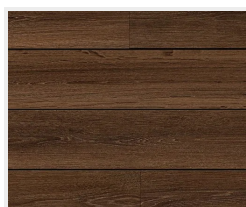
Drevená podlaha  
svetlá  
(zvislo)



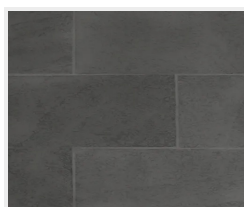
Drevená podlaha  
svetlá  
(priečne)



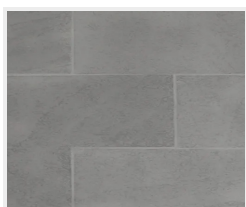
Drevená podlaha  
tmavá  
(zvislo)



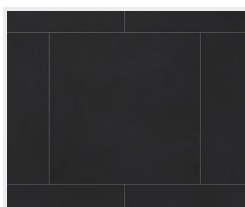
Drevená podlaha  
tmavá  
(priečne)



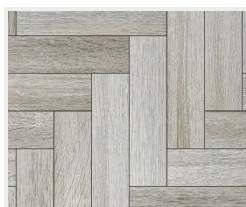
Dlažba  
(tmavo šedá)



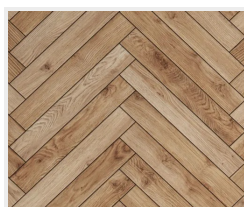
Dlažba  
(svetlo šedá)



Dlažba  
(čierna)



Parkety  
(šedé)



Parkety  
(dubové)



Betonová podlaha



Dub svetlý  
(zvislo)



Dub svetlý  
(priečne)



Dub tmavý  
(zvislo)



Dub tmavý  
(priečne)



Dlažba  
(biela)



Dlažba  
(terakota)