



Tento obrázok dverí je ilustračný

Interiérové dvere Well

Nudia Vás na interiérových dverách klasické zasklievacie rámčeky? Tak si zvolte dvere z rady Well s jemnou priečkou, ktorá opticky rozdelí sklenenú plochu dverí na viac dielov.

Možnosti prevedenia dverí Well a zárubne



Materiál a farebné prevedenia



CPL laminát

CPL laminát s Premiumkante



Interiérové dvere s iemnými priečkami

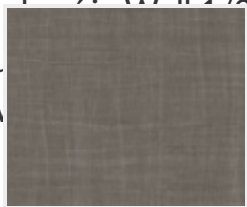


Nudia Vás na dverách klasické zasklievacie rámčeky? Tak si zvolte interiérové dvere z rady

Všetchny dvere sú modelované podľa štandardu EN 1906, kde je sklenená plocha len opticky rozdelená na časti. Typická pre modely Well 1/2, 1/3 a 1/4. Najvyššie presklenie je možné u modelov Well 1/2 a 1/3.



Karo grey



Karo dark



Lak



Biela exklusív 9016



Biela exklusív



RAL nástrek

Všetchny dvere sme schopní nalakovať akoukoľvek farbou zo vzorkovníka RAL, pre viac informácií nás [kontaktujte](#).

Možnosti presklenia



Crepi



Kathedral

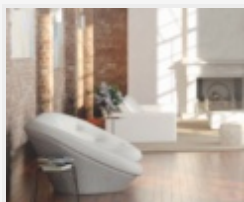


Kôra číra

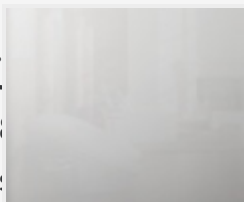


Činčila číra

Už 30 rokov sa špecializujeme na predaj a montáž interiérových dverí a sme výhradnými dovozcami dverí prestížnej nemeckej značky PRÜM pre Českú a Slovenskú republiku s rozsiahlou predajnou sieťou.



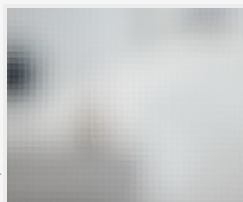
Float



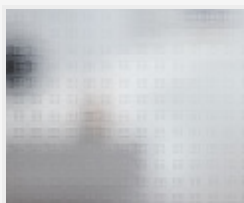
Matelux



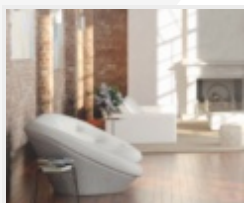
Krizet



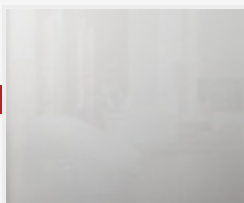
Master-carre



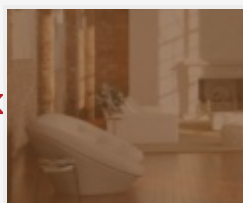
Masterlens



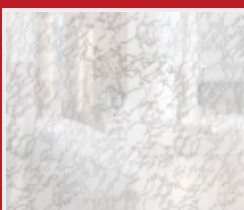
Connex číry



Connex mliečny



Planibel bronz



Delta číra



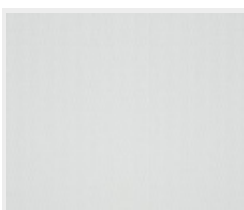
Thela číra



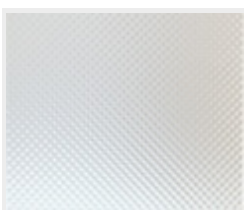
Silk biely



Pavé biele

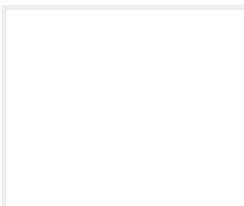


Screen

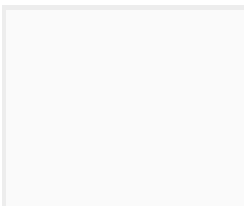


Mastersoft

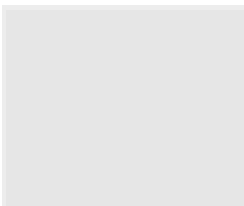
Farebné prevedenie steny



Biela



Šedá 1



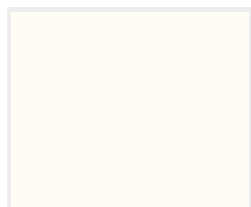
Šedá 2



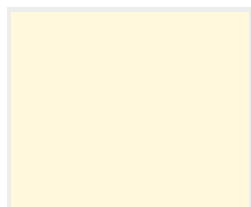
Šedá 3



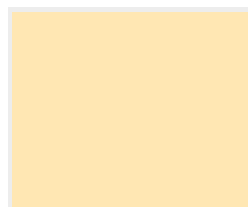
Šedá 4



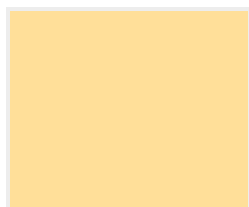
Žltá 1



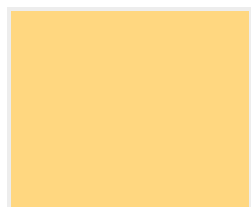
Žltá 2



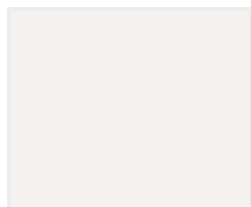
Žltá 3



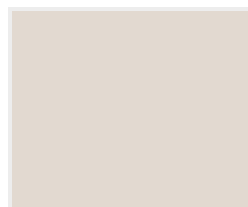
Žltá 4



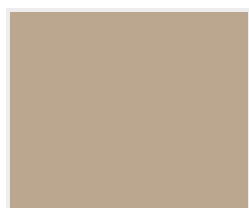
Žltá 5



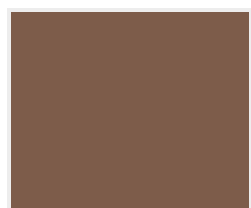
Hnedá 1



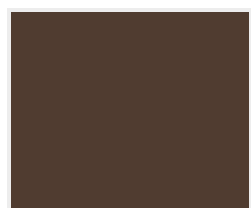
Hnedá 2



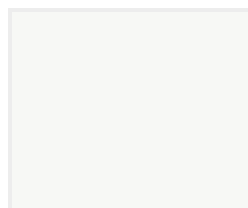
Hnedá 3



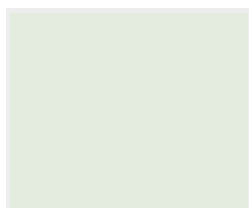
Hnedá 4



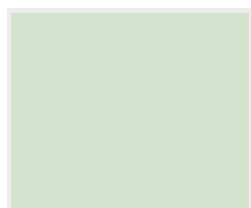
Hnedá 5



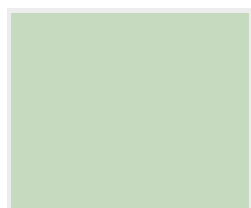
Zelená 1



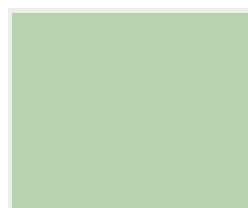
Zelená 2



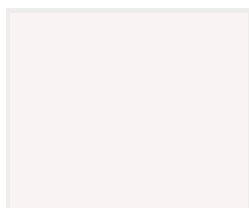
Zelená 3



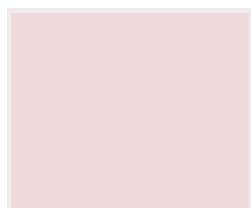
Zelená 4



Zelená 5



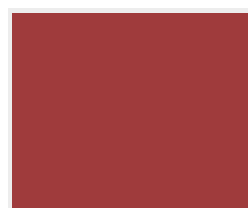
Červená 1



Červená 2



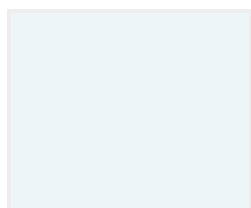
Červená 3



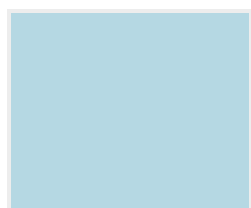
Červená 4



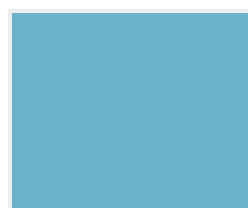
Červená 5



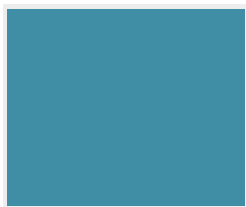
Modrá 1



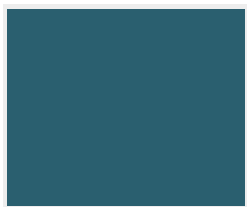
Modrá 2



Modrá 3

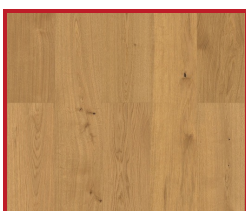


Modrá 4

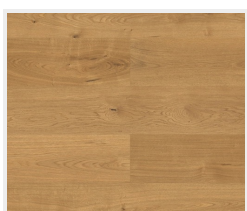


Modrá 5

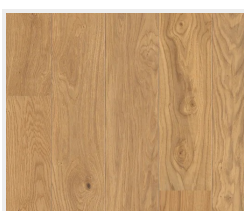
Farebné prevedenie podlahy



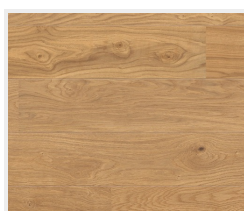
Dub Markant
(zvislo)



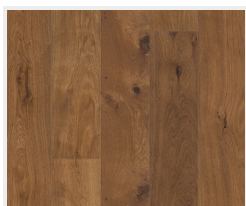
Dub Markant
(priečne)



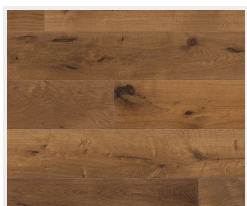
Dub Markant silk
(zvislo)



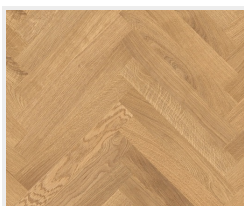
Dub Markant silk
(priečne)



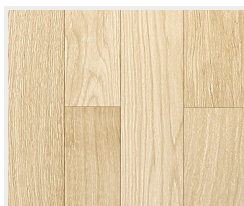
Dub Mocca
Rustikal
(zvislo)



Dub Mocca
Rustikal
(priečne)



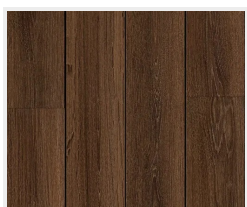
Dub Trend
(vzor parketa)



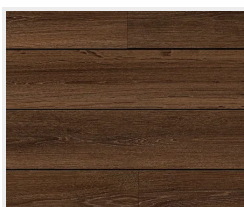
Drevená podlaha
svetlá
(zvislo)



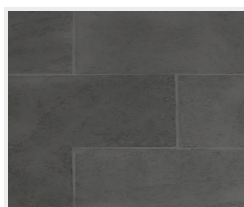
Drevená podlaha
svetlá
(priečne)



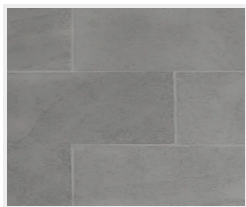
Drevená podlaha
tmavá
(zvislo)



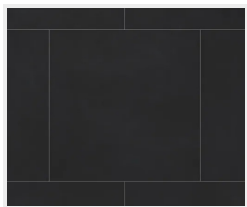
Drevená podlaha
tmavá
(priečne)



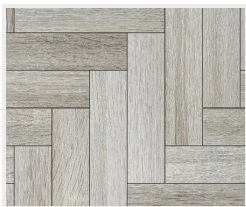
Dlažba
(tmavo šedá)



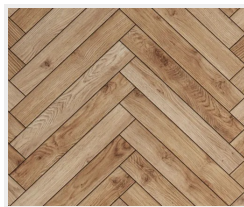
Dlažba
(svetlo šedá)



Dlažba
(čierna)



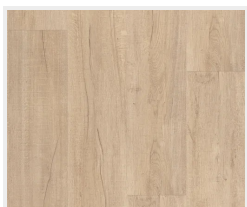
Parkety
(šedé)



Parkety
(dubové)



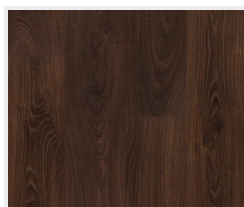
Betonová podlaha



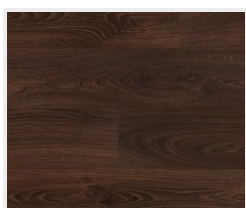
Dub svetlý
(zvislo)



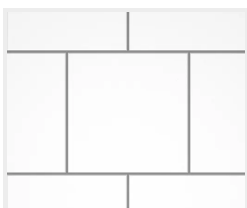
Dub svetlý
(priečne)



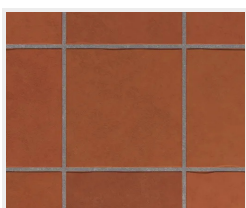
Dub tmavý
(zvislo)



Dub tmavý
(priečne)



Dlažba
(biela)



Dlažba
(terakota)