



Tento obrázok dverí je ilustračný

**Interiérové dvere Well**

Nudia Vás na interiérových dverách klasické zasklievacie rámčeky? Tak si zvolte dvere z rady Well s jemnou priečkou, ktorá opticky rozdelí sklenenú plochu dverí na viac dielov.

## Možnosti prevedenia dverí Well a zárubne



## Materiál a farebné prevedenia

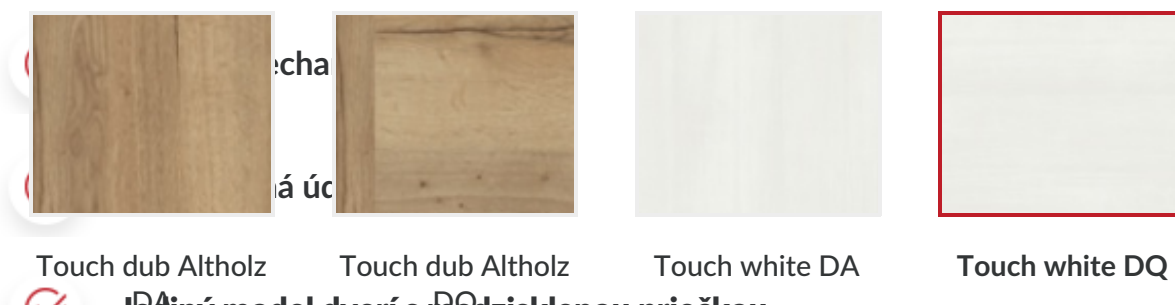


CPL laminát

CPL laminát s Premiumkante



## Interiérové dvere s iemnými priečkami



Nudia Vás na dverách klasické zasklievacie rámčeky? Tak si zvolte interiérové dvere z rady

V Well 1/2, 1/3 a 1/4, kde je sklenená plocha len opticky rozdelená mriežkou. Táto možnosť je typická pre modely Well 1/2, 1/3 a 1/4. Najvyššie presklenie Well 1/2 umožňuje väčším maximálnym presklením, ktoré je možné u



Karo grey



Karo dark



## Lak



Biela exklusív 9016



Biela exklusív



## RAL nástrek

Všetky dvere sme schopní nalakovať akoukoľvek farbou zo vzorkovníka RAL, pre viac informácií nás [kontaktujte](#).

## Možnosti presklenia



Crepi



Kathedral



Kôra číra

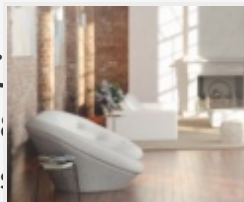


Činčila číra

Už 30 rokov sa špecializujeme na predaj a montáž interiérových dverí a sme výhradnými dovozcami dverí prestížnej nemeckej značky PRÜM pre Českú a Slovenskú republiku s rozsiahlou predajnou sieťou.



Činčila bronz



Float



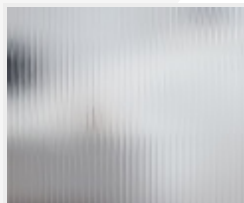
Matelux



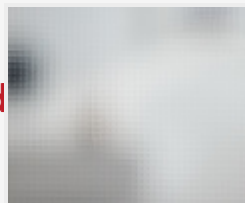
Krizet



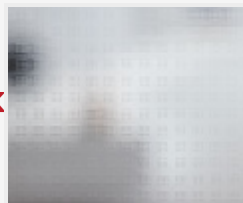
Masterlitrál



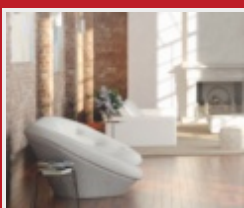
Masterlinea



Master-carre



Masterlens



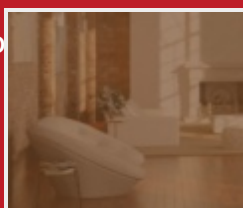
Connex číry



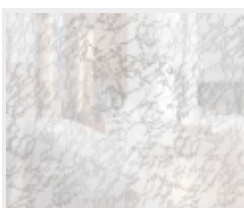
Connex mliečny



Uadi biele



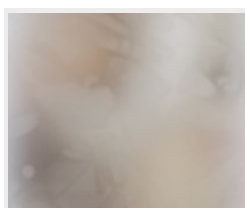
Planibel bronz



Delta číra



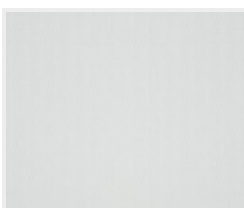
Thela číra



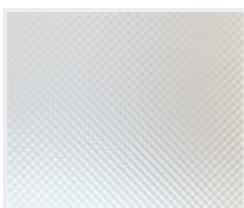
Silk biely



Pavé biele

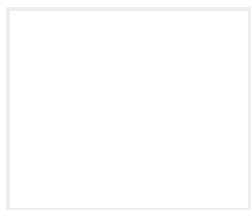


Screen

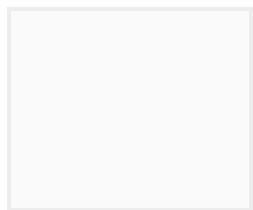


Mastersoft

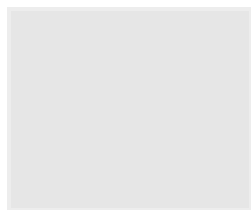
## Farebné prevedenie steny



Biela



Šedá 1



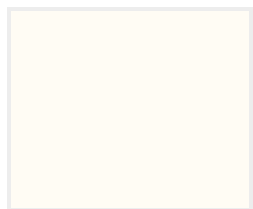
Šedá 2



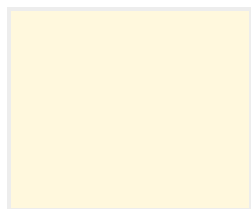
Šedá 3



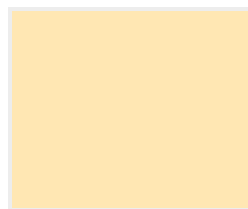
Šedá 4



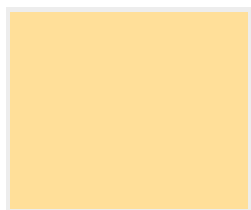
Žltá 1



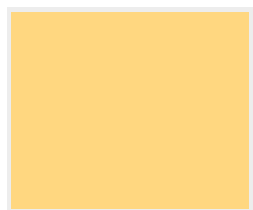
Žltá 2



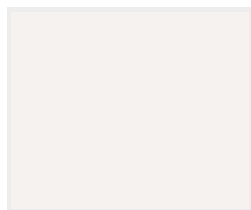
Žltá 3



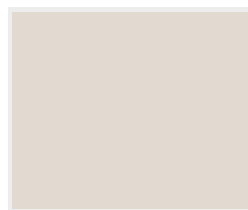
Žltá 4



Žltá 5



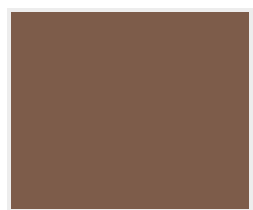
Hnedá 1



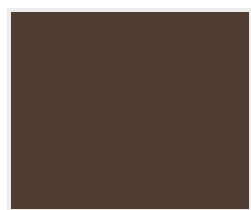
Hnedá 2



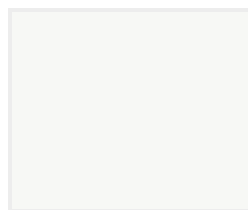
Hnedá 3



Hnedá 4



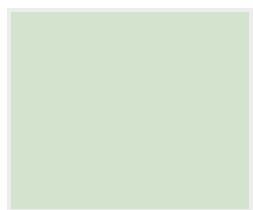
Hnedá 5



Zelená 1



Zelená 2



Zelená 3



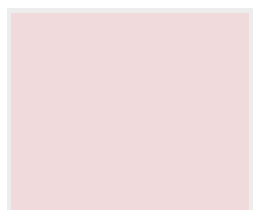
Zelená 4



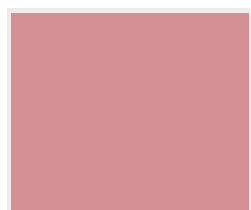
Zelená 5



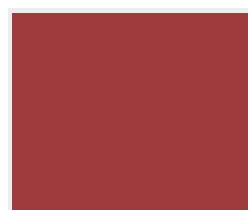
Červená 1



Červená 2



Červená 3



Červená 4



Červená 5



Modrá 1



Modrá 2



Modrá 3

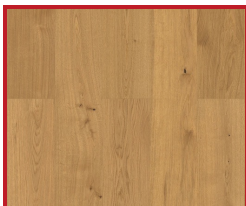


Modrá 4

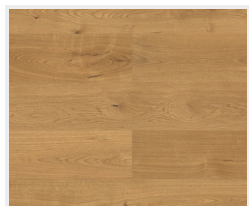


Modrá 5

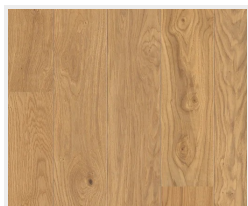
## Farebné prevedenie podlahy



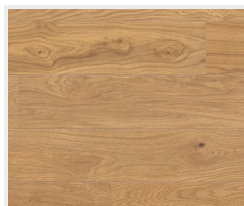
Dub Markant  
(zvislo)



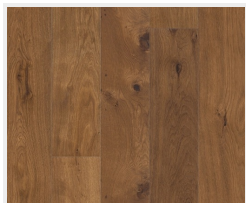
Dub Markant  
(priečne)



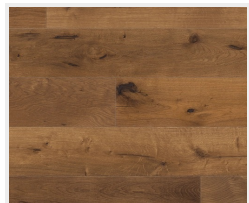
Dub Markant silk  
(zvislo)



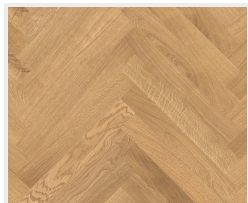
Dub Markant silk  
(priečne)



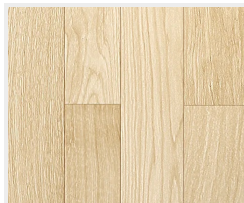
Dub Mocca  
Rustikal  
(zvislo)



Dub Mocca  
Rustikal  
(priečne)



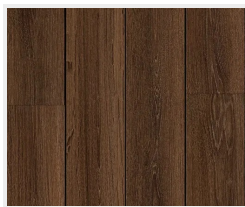
Dub Trend  
(vzor parketa)



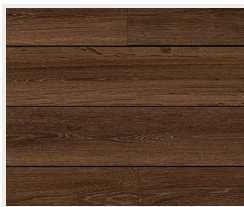
Drevená podlaha  
svetlá  
(zvislo)



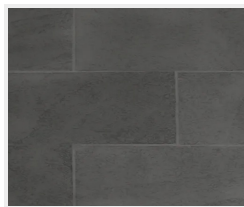
Drevená podlaha  
svetlá  
(priečne)



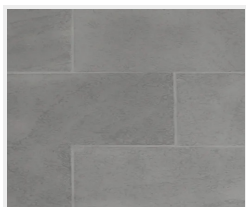
Drevená podlaha  
tmavá  
(zvislo)



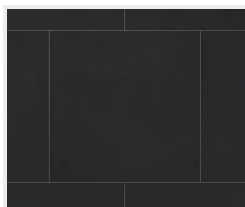
Drevená podlaha  
tmavá  
(priečne)



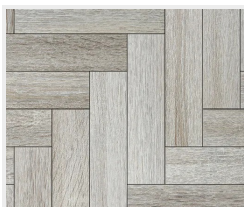
Dlažba  
(tmavo šedá)



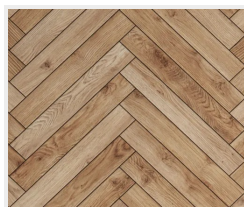
Dlažba  
(svetlo šedá)



Dlažba  
(čierna)



Parkety  
(šedé)



Parkety  
(dubové)



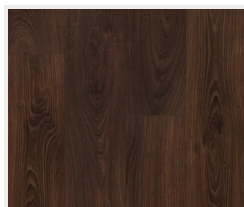
Betonová podlaha



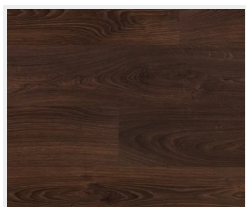
Dub svetlý  
(zvislo)



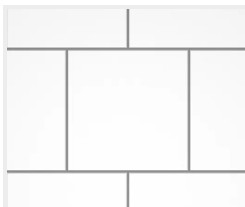
Dub svetlý  
(priečne)



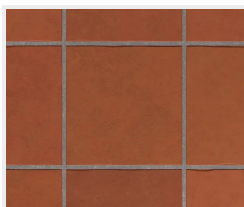
Dub tmavý  
(zvislo)



Dub tmavý  
(priečne)



Dlažba  
(biela)



Dlažba  
(terakota)