



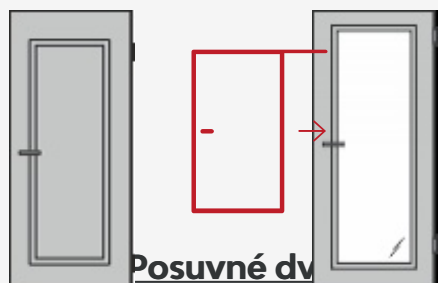
Tento obrázok dverí je ilustračný

Interiérové dvere **Modena**

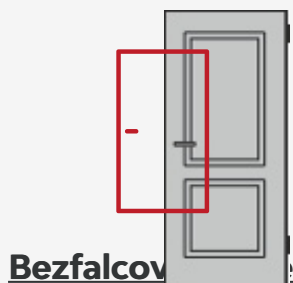
Profilované biele interiérové dvere, ktoré sú okúzľujúcim príkladom secesnej dokonalosti. Dvere sa hodia zvlášť pre exkluzívne rekonštrukcie.

Možnosti prevedenia

Ďalšie prevedenia dverí **Modena a zárubne**

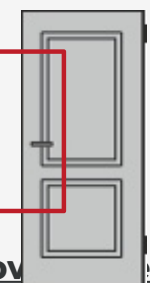


Modena M1

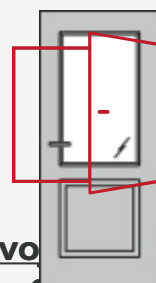


Bez falcov

Modena ML1

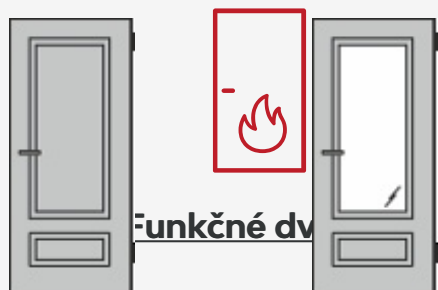


Modena M2



Dvo
dv

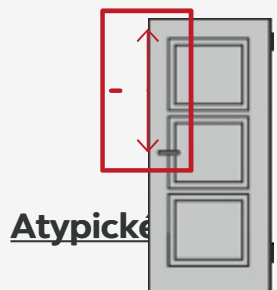
Modena ML2



Modena M2/1

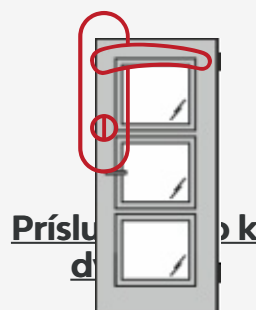
Funkčné dv

Modena ML2/1



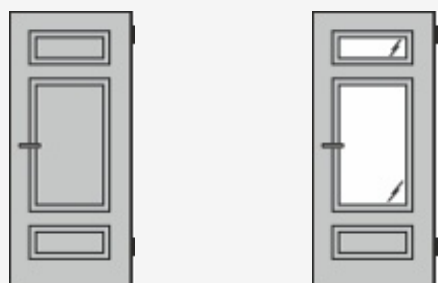
Atypické

Modena M3



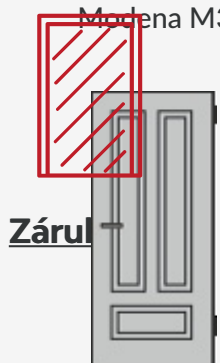
Príslu
d

Modena ML3



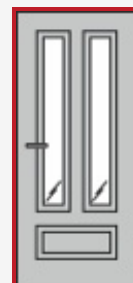
Modena M3/1

Modena ML3/1



Zárul

Modena M3/2



Modena ML3/2

Materiál a farebné prevedenia



Lak

Biela exklusív



RAL nástrek

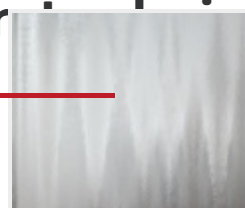
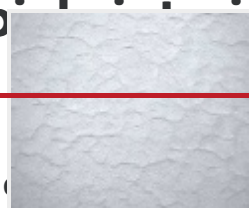
Všetky dve
informácií



RAL, pre viac

Možnosti presklenia

Funkční běhání – proč a jak



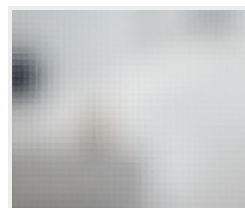
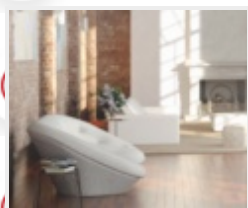
Crepis

Pevná a stabilná konštrukcia

Kathedraal

Kôra číra

Činčila číra

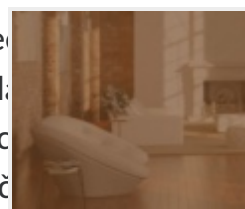
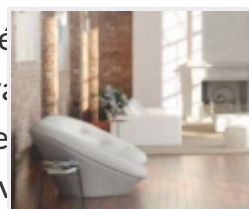
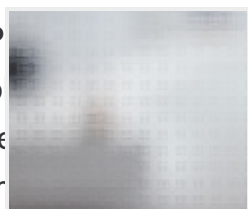


Float

Matelux

Krizet

Master-carre



P...rové...okúz...n se...ti Vás

o býva nco zvl

re zide vere n arc vkom

ruov or. v kejš zdobné

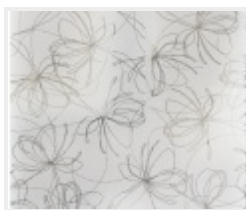
vchody do budov v štýle Art deco, secesné tepané schodište, vysoké stropy, drevené podlahy
a tieto dvere. Dvere sú aj neodolateľnou súčasťou interiérových štýlov Provensal, Glamour či
Retro.



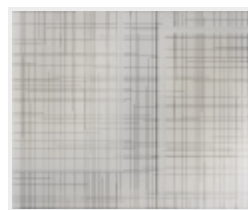
Thela číra



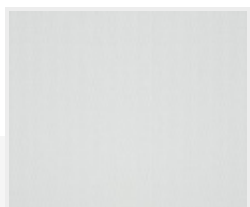
Pavé biele



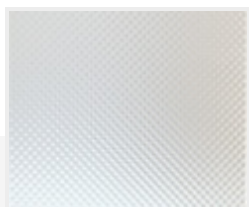
Petali



Panno

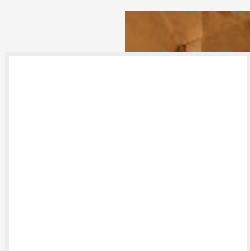


Screen

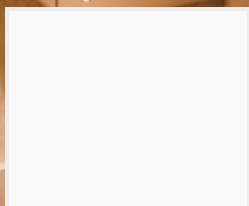


Mastersoft

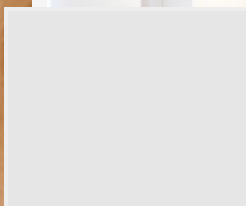
Farebné prevedenie dvere Modena v realizáciách



Biela



Šedá 1



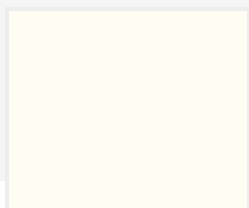
Šedá 2



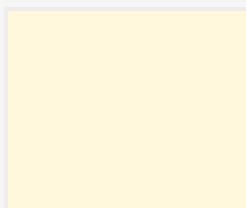
Šedá 3



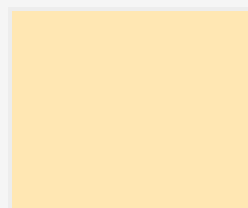
Šedá 4



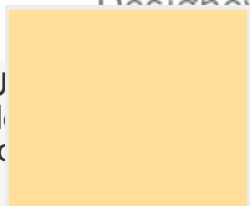
Žltá 1



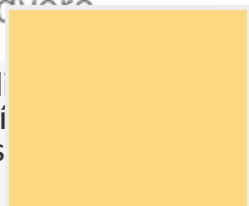
Žltá 2



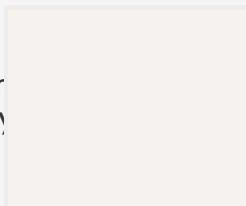
Žltá 3



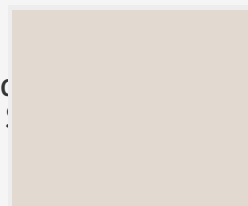
Žltá 4



Žltá 5



Hnedá 1

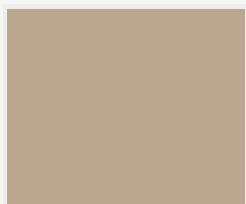


Hnedá 2

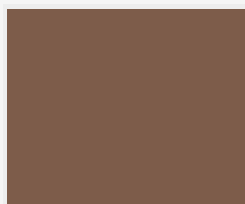
DVERE PRÜM, s.r.o.
Hodonínska 8436/27
841 03 Bratislava



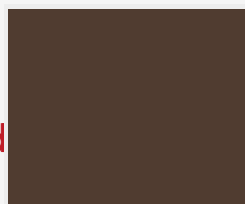
+421 944 501 505
(Po - So 10.00-18.30 h)



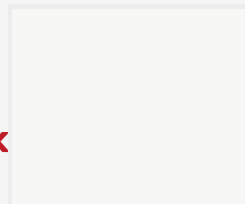
Hnedá 3



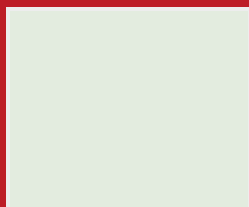
Hnedá 4



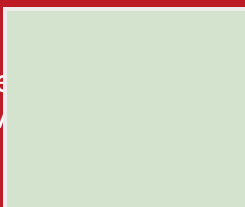
Hnedá 5



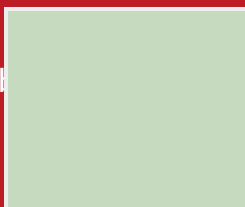
Zelená 1



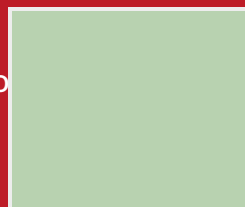
Zelená 2



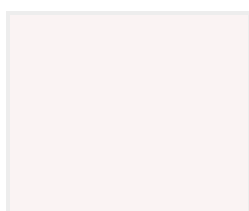
Zelená 3



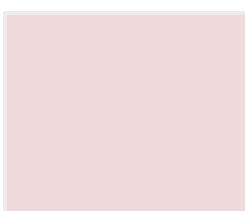
Zelená 4



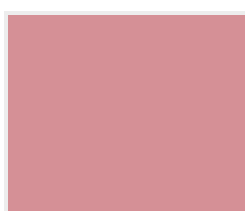
Zelená 5



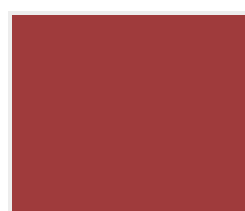
Červená 1



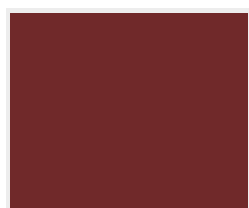
Červená 2



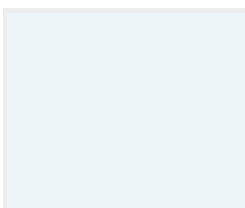
Červená 3



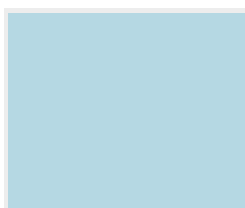
Červená 4



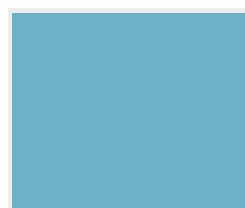
Červená 5



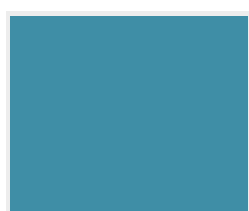
Modrá 1



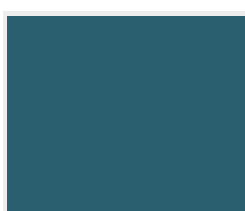
Modrá 2



Modrá 3

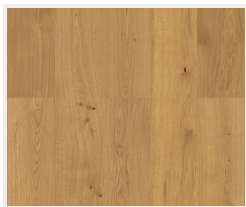


Modrá 4



Modrá 5

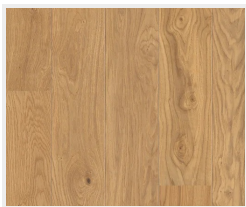
Farebné prevedenie podlahy



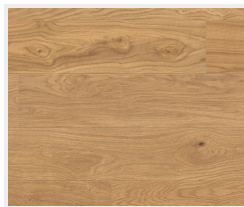
Dub Markant
(zvislo)



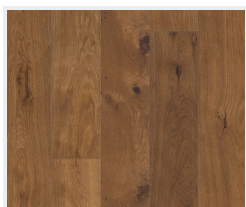
Dub Markant
(priečne)



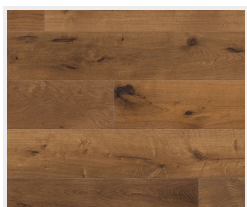
Dub Markant silk
(zvislo)



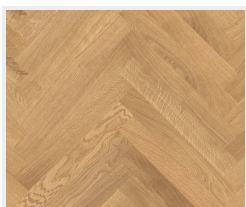
Dub Markant silk
(priečne)



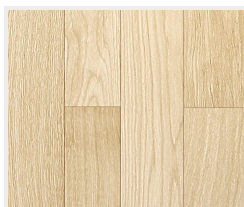
Dub Mocca
Rustikal
(zvislo)



Dub Mocca
Rustikal
(priečne)



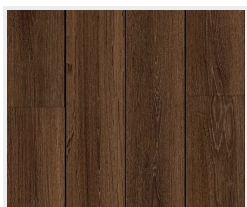
Dub Trend
(vzor parketa)



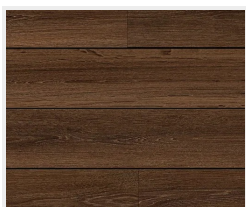
Drevená podlaha
svetlá
(zvislo)



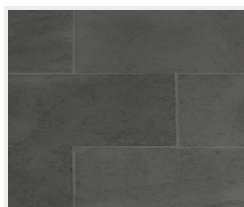
Drevená podlaha
svetlá
(priečne)



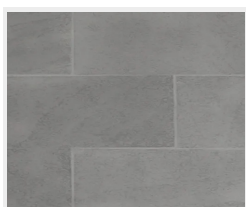
Drevená podlaha
tmavá
(zvislo)



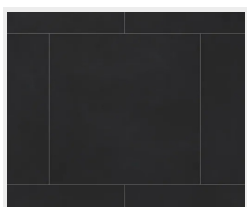
Drevená podlaha
tmavá
(priečne)



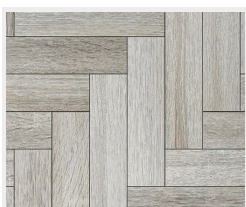
Dlažba
(tmavo šedá)



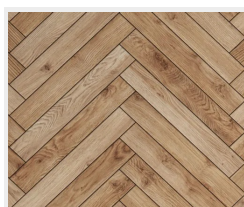
Dlažba
(svetlo šedá)



Dlažba
(čierna)



Parkety
(šedé)



Parkety
(dubové)



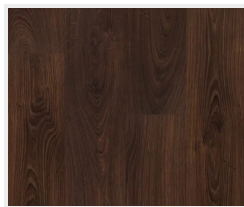
Betonová podlaha



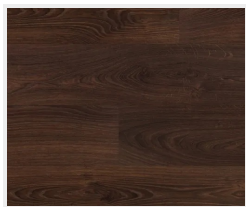
Dub svetlý
(zvislo)



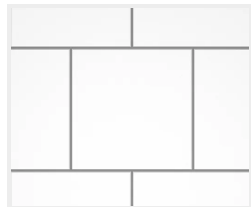
Dub svetlý
(priečne)



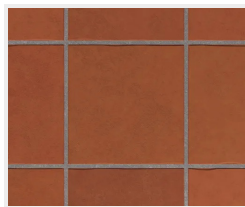
Dub tmavý
(zvislo)



Dub tmavý
(priechne)



Dlažba
(biela)



Dlažba
(terakota)