



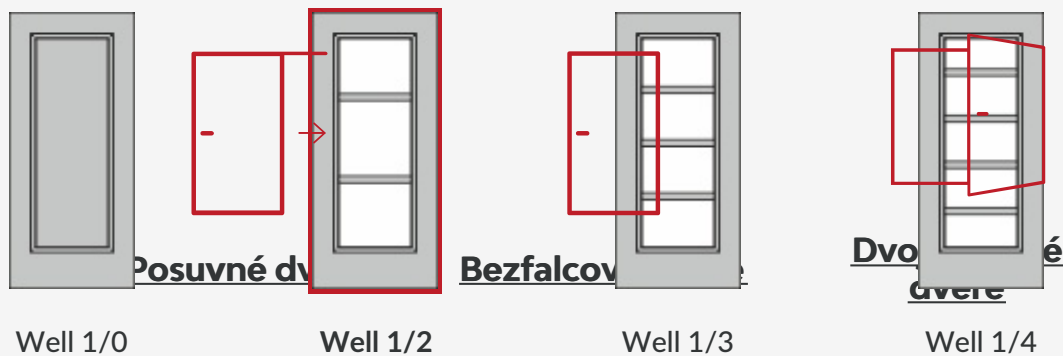
Tento obrázok dverí je ilustračný

Interiérové dvere **Well**

Nudia Vás na interiérových dverách klasické zasklievacie rámčeky? Tak si zvolte dvere z rady Well s jemnou priečkou, ktorá opticky rozdelí sklenenú plochu dverí na viac dielov.

Možnosti prevedenia

Ďalšie prevedenia dverí **Well a zárubne**



Materiál a farebné prevedenia

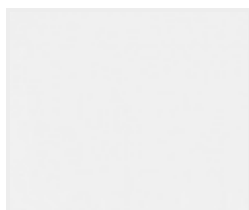


Zárubne

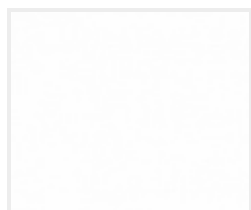


CPL laminát

CPL laminát s Premiumkante



Biely lak (9010)



Biela 9016



Jaseň biely



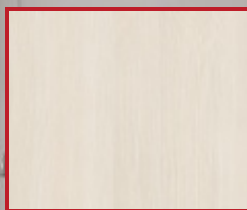
Javor PUR



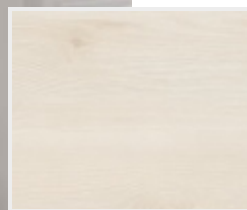
Dub



Buk PUR



Touch dub biely
DA



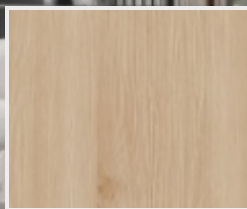
Touch dub biely
DQ



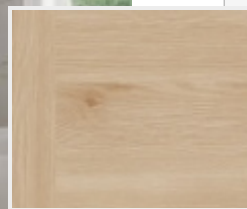
Touch dub creme
DA



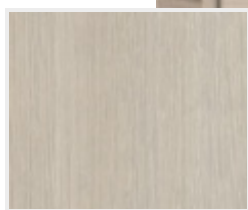
Touch dub creme
DQ



Touch dub natur
DA



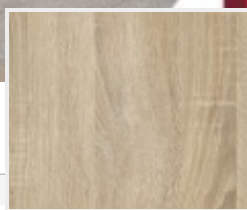
Touch dub natur
DQ



Touch pínia DA



Touch pínia DQ



Touch dub DA

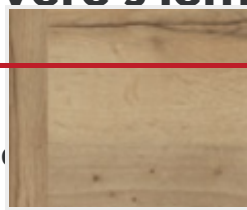


Touch dub DQ

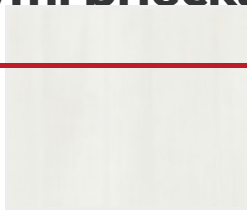
Interiérové dvere s iemnými priečkami



V



ých



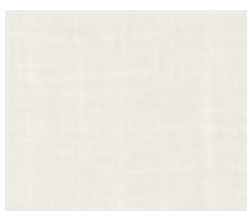
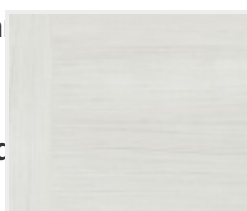
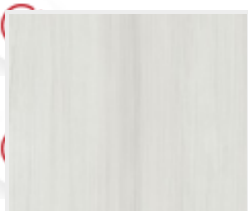
Touch white DA



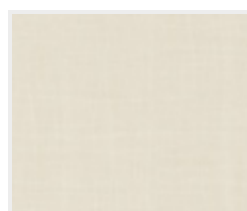
Touch white DQ



Prvá možnosť konštrukcie
DA DQ



Karo white



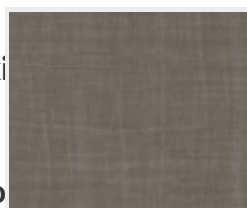
Karo beige



Touch grey DA

Touch grey DQ

Jediný model dverí s medzisklenou priečkou



Karo grey

Karo dark

maxi

e dverného krídla -model Well L1

mo

Nudia Vás na dverách klasické zasklievacie rámečky? Tak si zvolte interiérové dvere z rady

V
m
N
d



Lak



Biela exklusív 9016
Nemecká kvalita



Biela exklusív
Dlhá životnosť



**Zdravotne
bezpečné produkty**



RAL nástreky

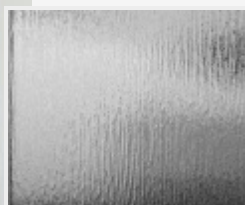
Všetky dvere sme schopní nalakovať akoukoľvek farbou zo vzorkovníka RAL, pre viac informácií nás [kontaktujte](#).

Možnosti presklenia Interiérové dvere Well v **realizáciách**

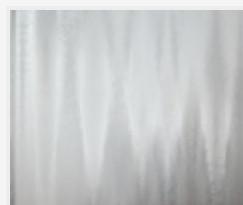


Crepi

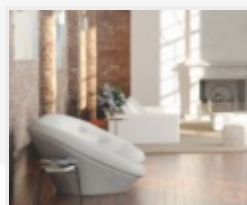
Kathedral



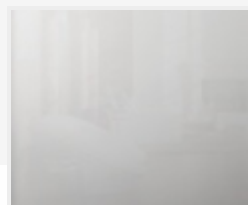
Kôra číra



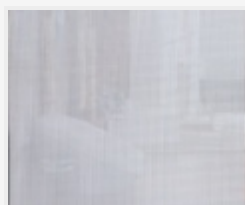
Činčila číra



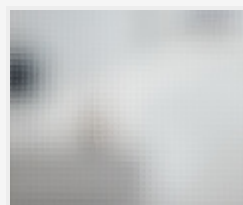
Float



Matelux



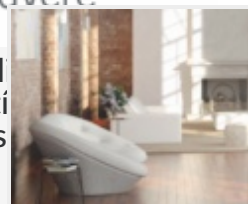
Krizet



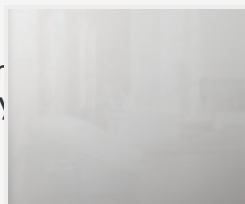
Master-carre



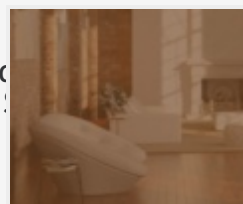
Masterlens



Connex číry



Connex mliečny



Planibel bronz

PRÜM
Designové dvere

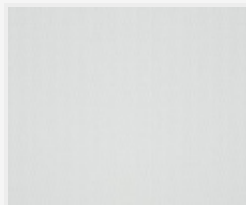
U
d
re
ce
cial
rest
ou s
ja m
ačky
ých d
ú a
dnými
iku s



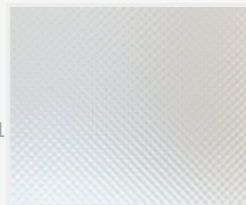
Thela číra



Pavé biele



Screen



Mastersoft

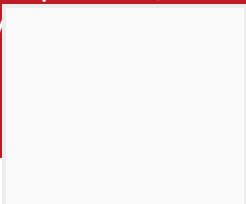


Farebné prevedenie steny obchod@dvereprum.sk

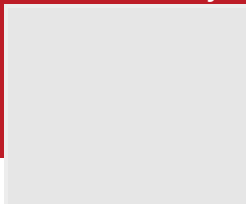
© 2024 www.dvereprum.sk, na celý obsah sa vzťahujú autorské práva podľa



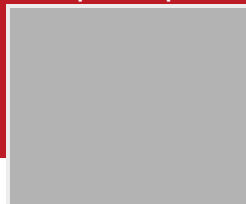
Biela



Šedá 1



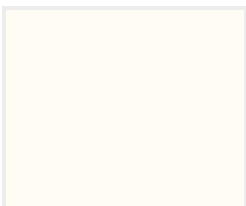
Šedá 2



Šedá 3



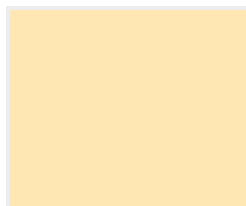
Šedá 4



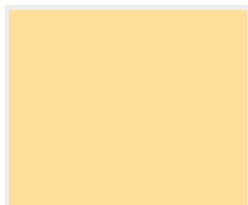
Žltá 1



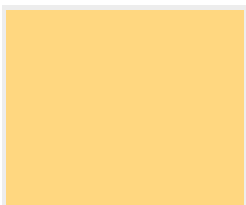
Žltá 2



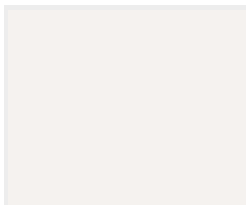
Žltá 3



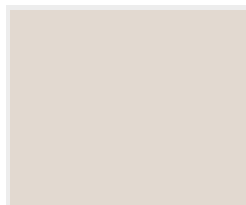
Žltá 4



Žltá 5



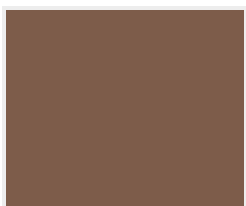
Hnedá 1



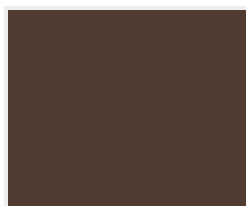
Hnedá 2



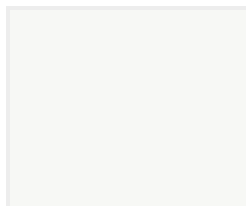
Hnedá 3



Hnedá 4



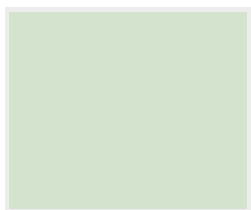
Hnedá 5



Zelená 1



Zelená 2



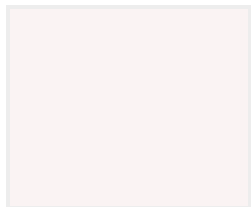
Zelená 3



Zelená 4



Zelená 5



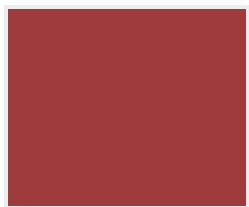
Červená 1



Červená 2



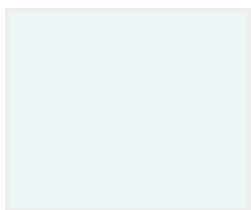
Červená 3



Červená 4



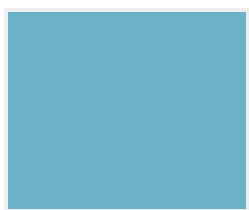
Červená 5



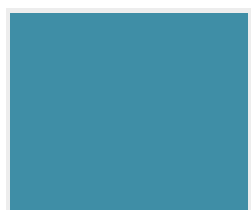
Modrá 1



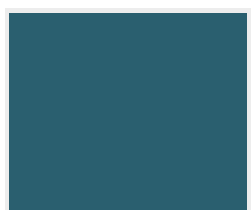
Modrá 2



Modrá 3

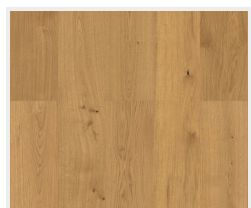


Modrá 4

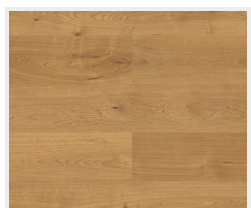


Modrá 5

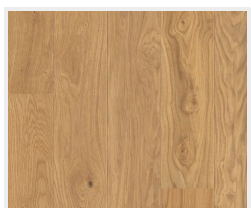
Farebné prevedenie podlahy



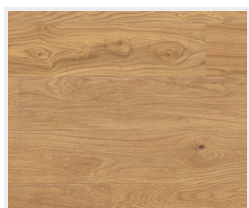
Dub Markant
(zvislo)



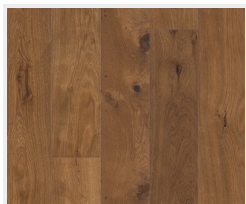
Dub Markant
(priečne)



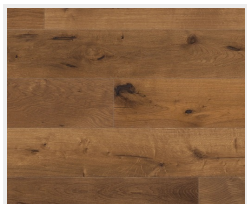
Dub Markant silk
(zvislo)



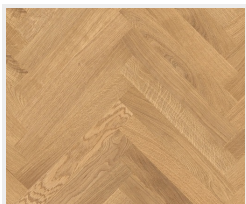
Dub Markant silk
(priečne)



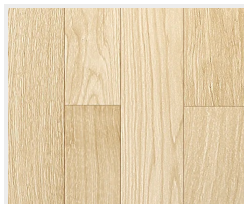
Dub Mocca
Rustikal
(zvislo)



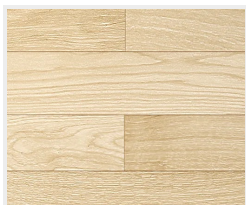
Dub Mocca
Rustikal
(priečne)



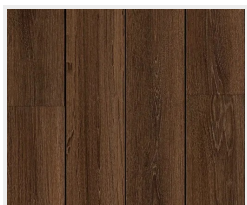
Dub Trend
(vzor parketa)



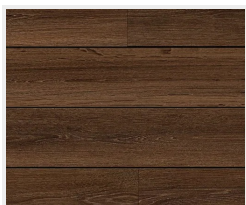
Drevená podlaha
svetlá
(zvislo)



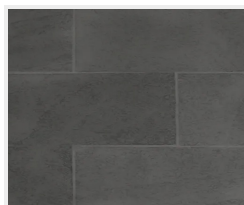
Drevená podlaha
svetlá
(priečne)



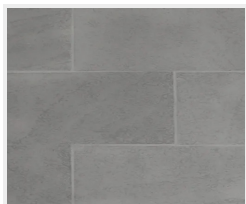
Drevená podlaha
tmavá
(zvislo)



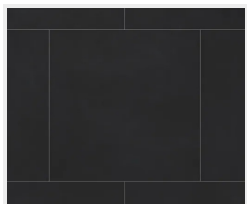
Drevená podlaha
tmavá
(priečne)



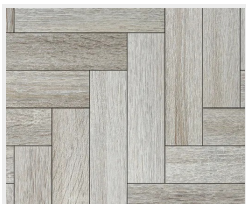
Dlažba
(tmavo šedá)



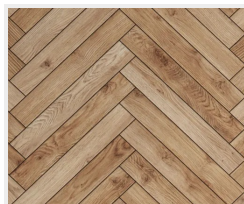
Dlažba
(svetlo šedá)



Dlažba
(čierna)



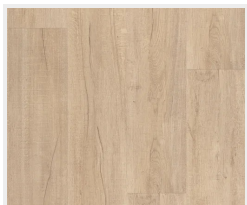
Parkety
(šedé)



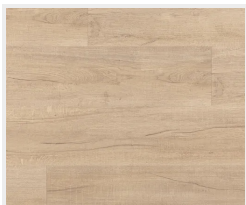
Parkety
(dubové)



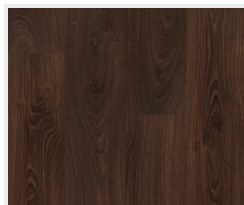
Betonová podlaha



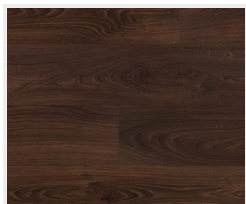
Dub svetlý
(zvislo)



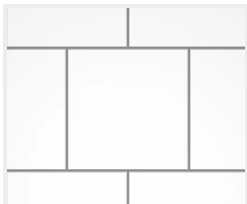
Dub svetlý
(priečne)



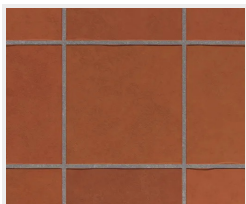
Dub tmavý
(zvislo)



Dub tmavý
(priečne)



Dlažba
(biela)



Dlažba
(terakota)